



# Reconstrucción artroscópica del ligamento talofibular anterior (LTFA) y calcáneofibular (CF) con sistema ajustable botón-sutura.

David Campillo Recio<sup>1,2</sup>, Lidia Ana Martín Domínguez<sup>1</sup>, Inés Farré Galofre<sup>1</sup>, Maximiliano Ibañez Malvestiti<sup>1</sup>, Juan Antonio Calle García<sup>2</sup>, Glòria Albertí Fitó<sup>1,2</sup>

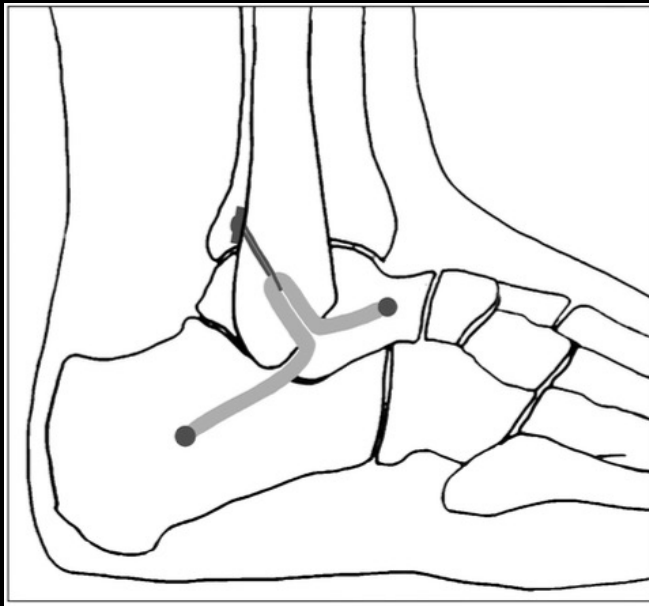
1. Unidad de Pie y Tobillo (ICATPIE) –Hospital Universitario Quirón-Dexeus, Barcelona
2. Hospital Germans Trias i Pujol, Barcelona

Archives of Orthopaedic and Trauma Surgery (2018) 138:1549–1555  
<https://doi.org/10.1007/s00402-018-2955-4>

ARTHROSCOPY AND SPORTS MEDICINE

## A new minimally invasive method for anatomic reconstruction of the lateral ankle ligaments with a Tightrope system

Yongxing Cao<sup>1</sup> · Yang Xu<sup>1</sup> · Yuan Hong<sup>1</sup> · Xiangyang Xu<sup>1</sup>



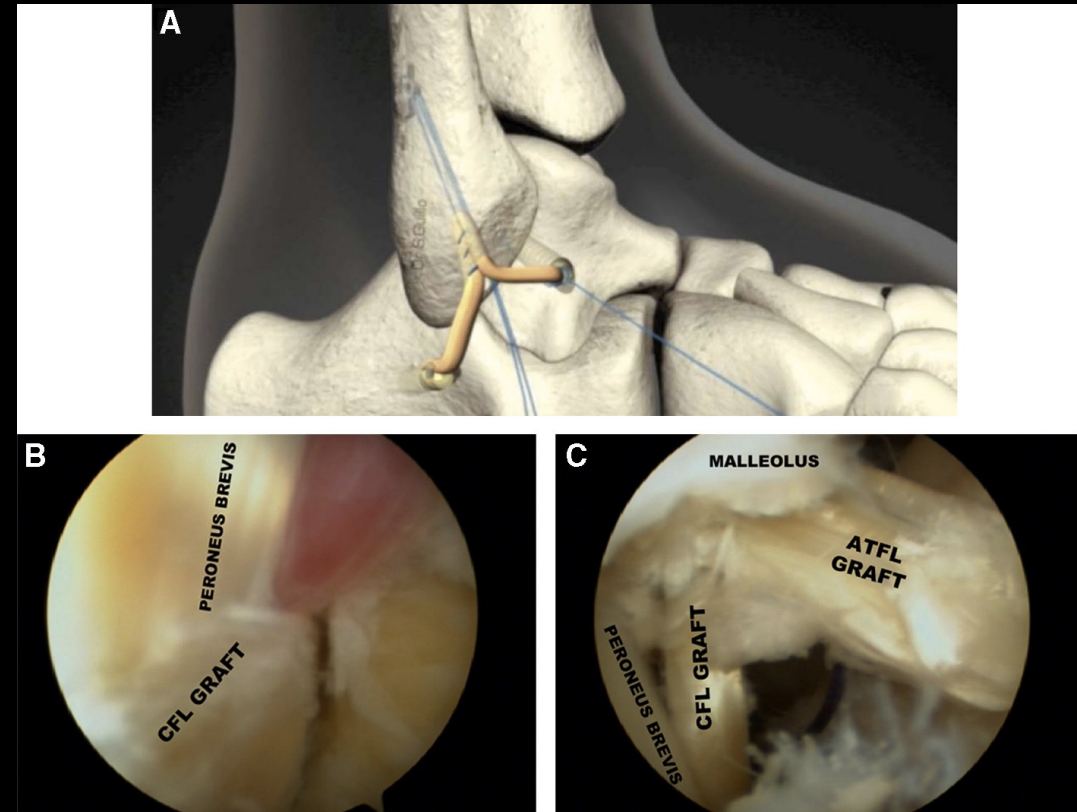
## Anatomical reconstruction of the anterior talofibular and calcaneofibular ligaments with an all-arthroscopic surgical technique

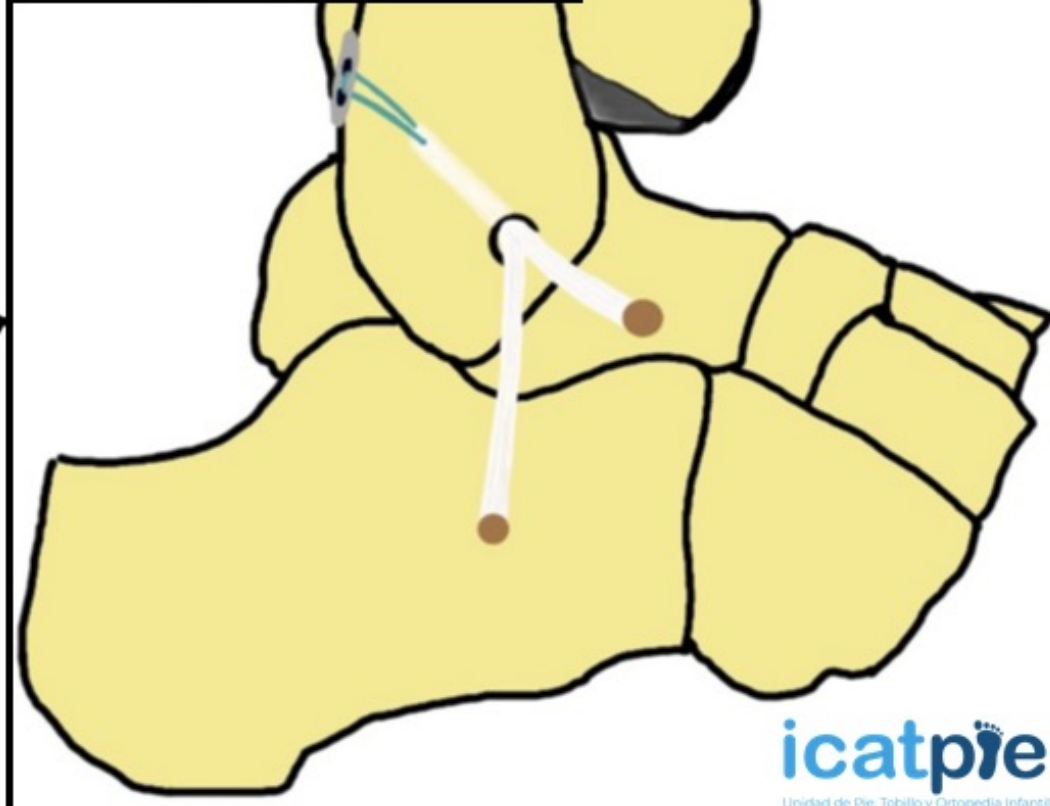
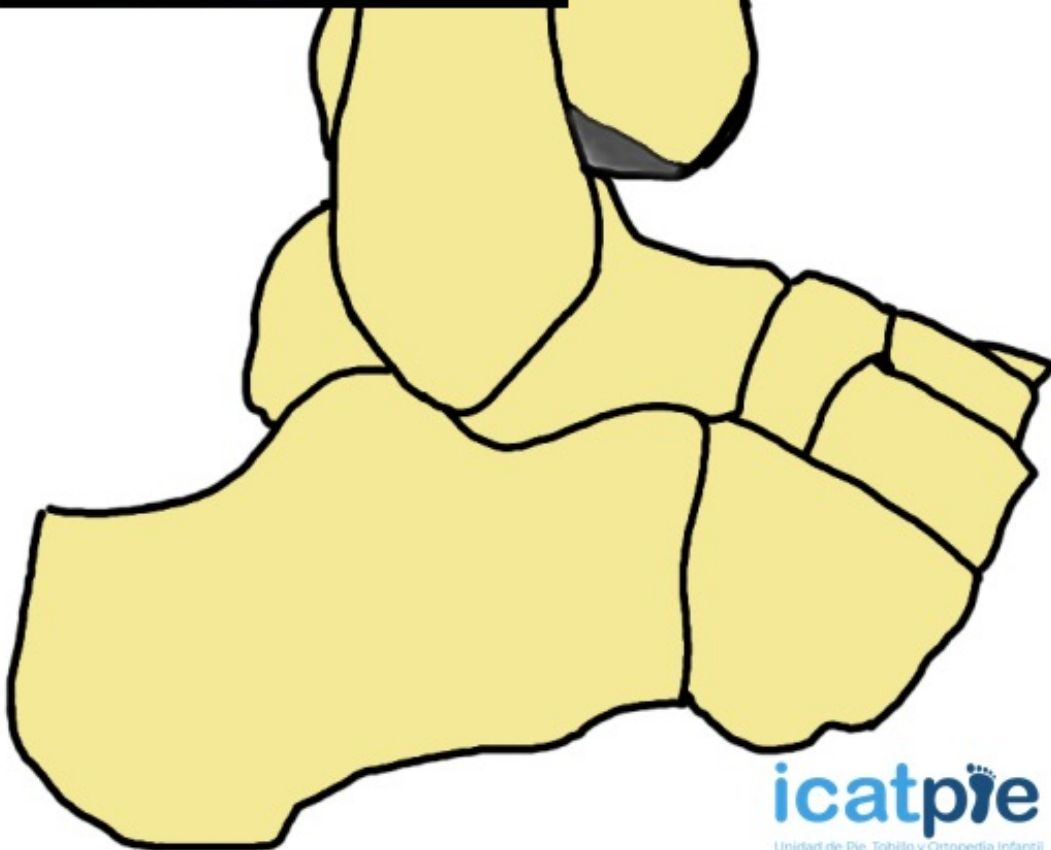
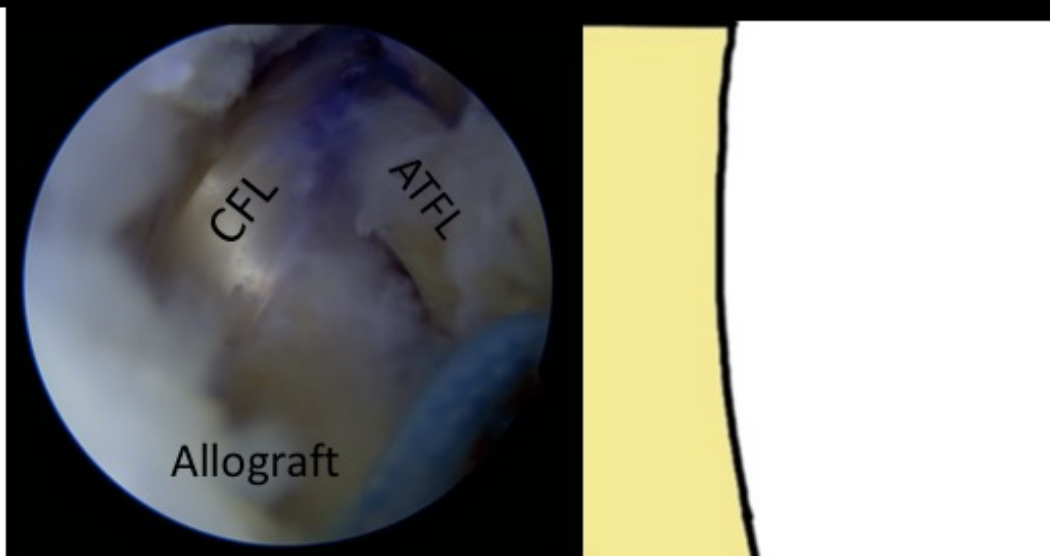
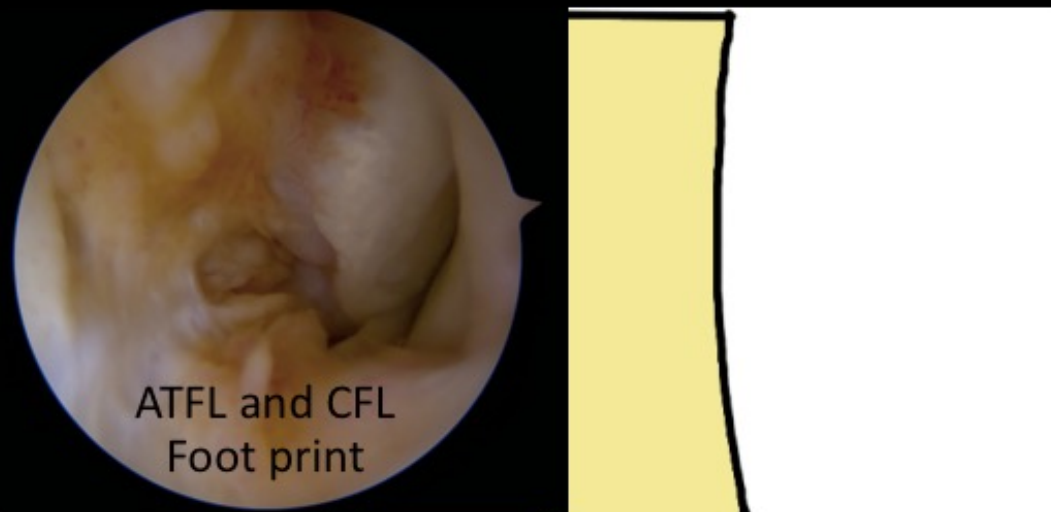
S. Guillo<sup>a</sup>, G. Cordier<sup>a</sup>, B. Sonnery-Cottet<sup>b</sup>, T. Bauer<sup>c,\*</sup>

<sup>a</sup> Clinique du sport, Bordeaux-Mérignac, France

<sup>b</sup> Centre orthopédique Santy, hôpital privé Jean-Mermoz, Lyon, France

<sup>c</sup> Service de chirurgie orthopédique et traumatologique, hôpital universitaire Ambroise-Paré, (AP-HP), hôpitaux universitaires Paris-Île-de-France Ouest, Boulogne-Billancourt, France

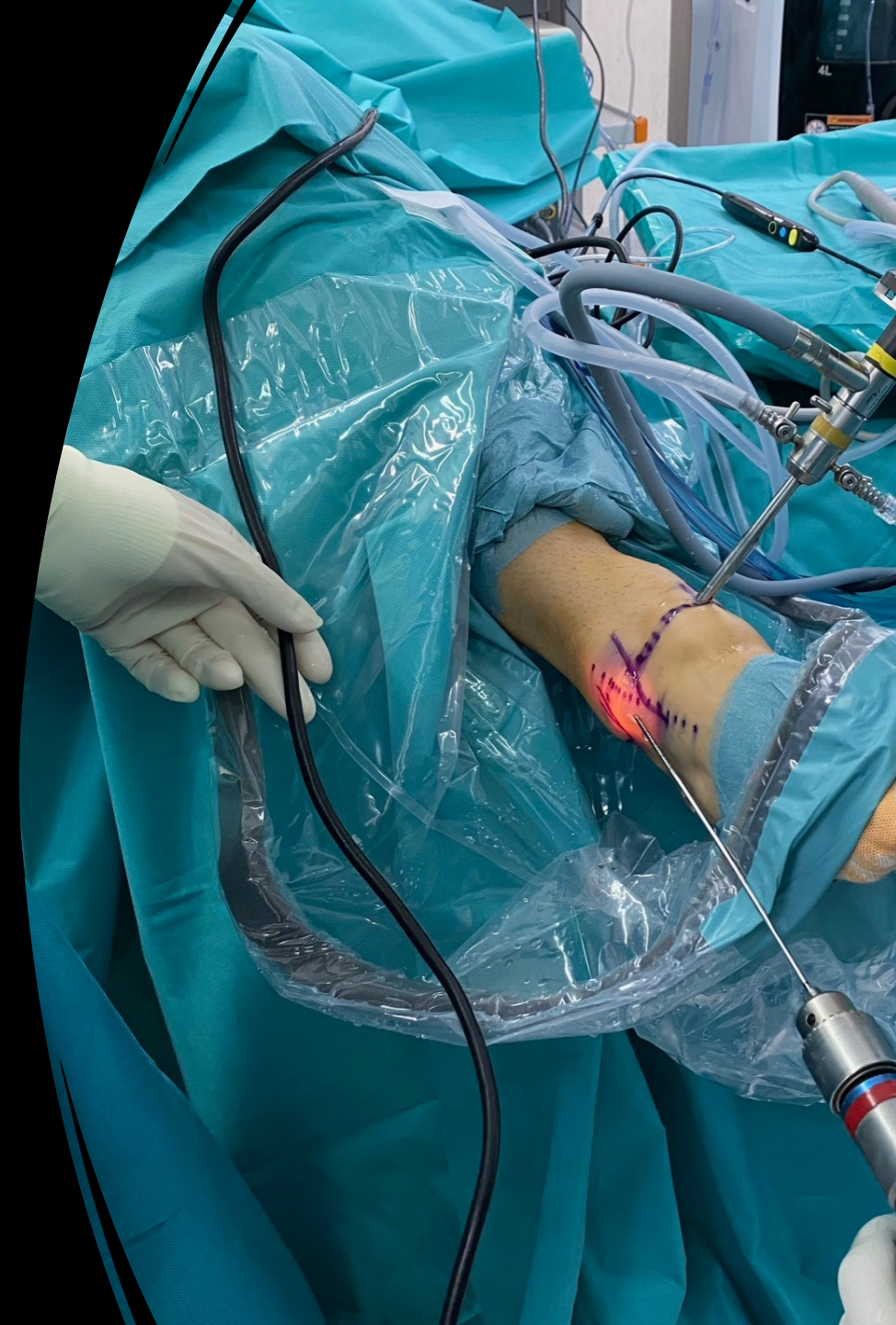


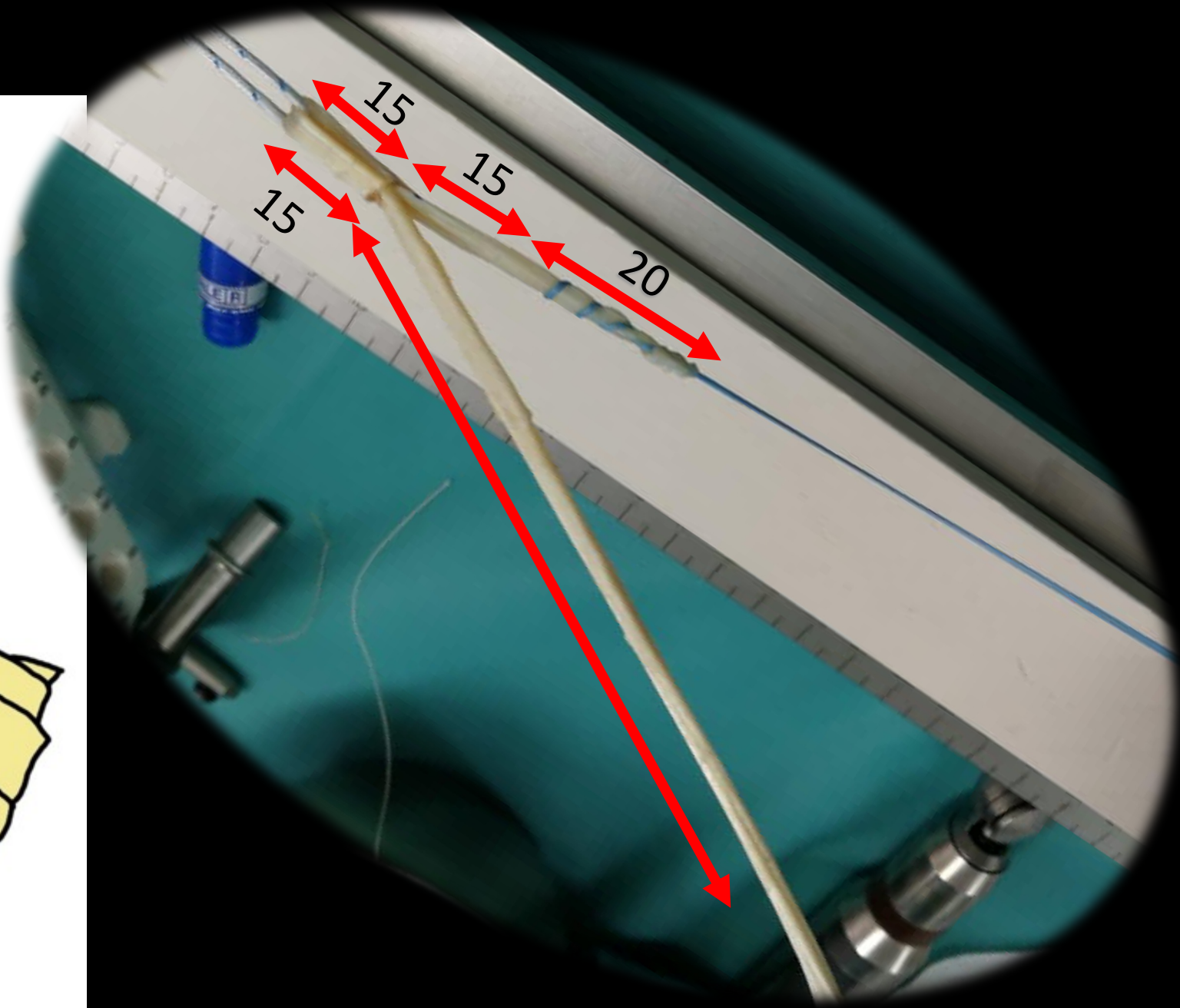
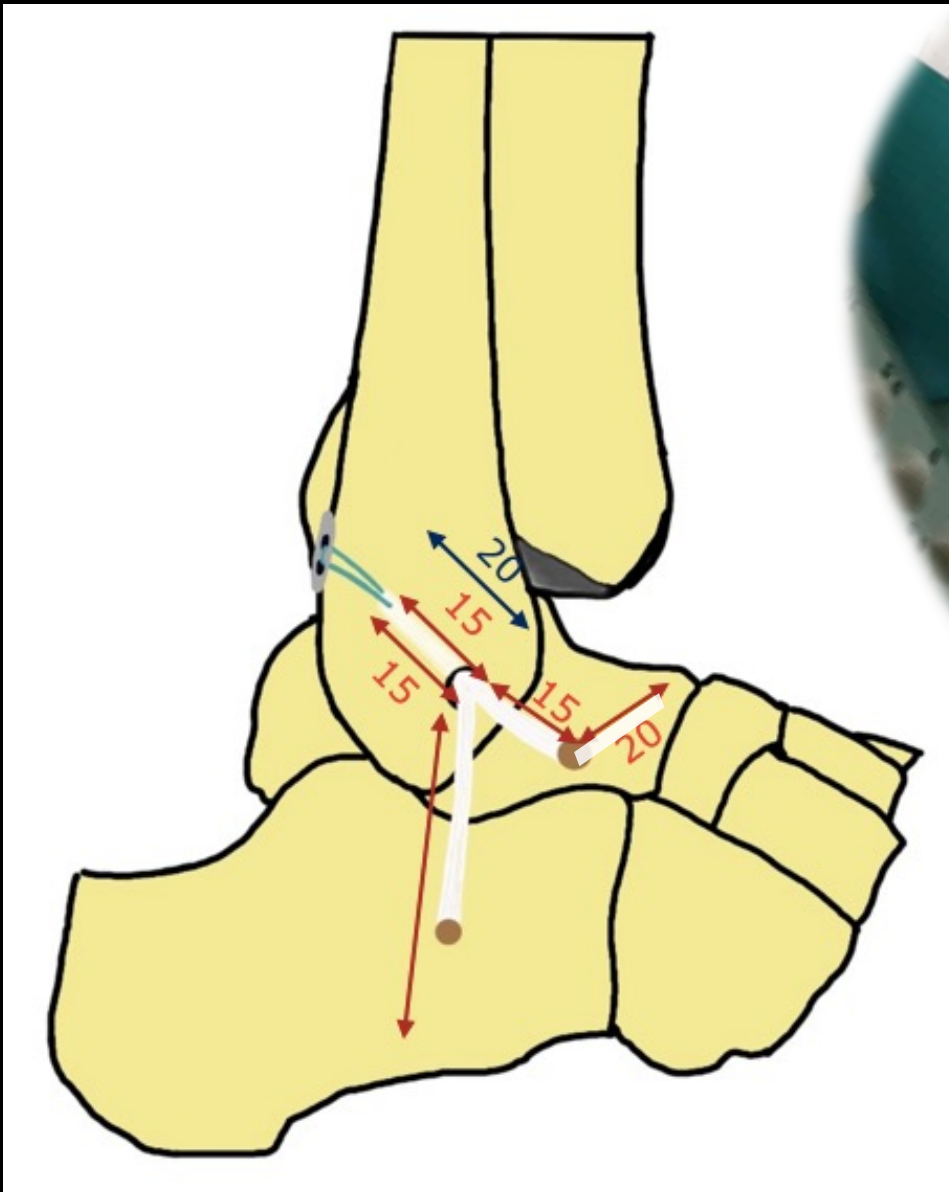




## Indicaciones:

- Inestabilidad crónica larga evolución
- Lesión de ambos fascículos (LTFA y LCF)
- Paciente con alto IMC
- Alta demanda funcional







# 9

CONGRESO CONJUNTO  
**AEA - SEROD**

9th JOINT AEA-SEROD CONGRESS

**MURCIA**

1, 2, 3 DE JUNIO | 2022



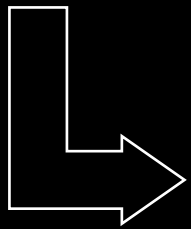
## Reconstrucción artroscópica del ligamento talofibular anterior (LTFA) y calcáneofibular (CF) con sistema ajustable botón-sutura.

David Campillo Recio<sup>1,2</sup>, Lidia Ana Martín Domínguez<sup>1</sup>, Inés Farré Galofre<sup>1</sup>,  
Maximiliano Ibañez Malvestiti<sup>1</sup>, Juan Antonio Calle García<sup>2</sup>, Glòria Albertí Fitó <sup>1,2</sup>

# PROTOCOLO POSTOPERATORIO

10-14 días

- Descarga con férula posterior yeso



A las 2  
semanas

- Iniciar carga progresiva con Bota.

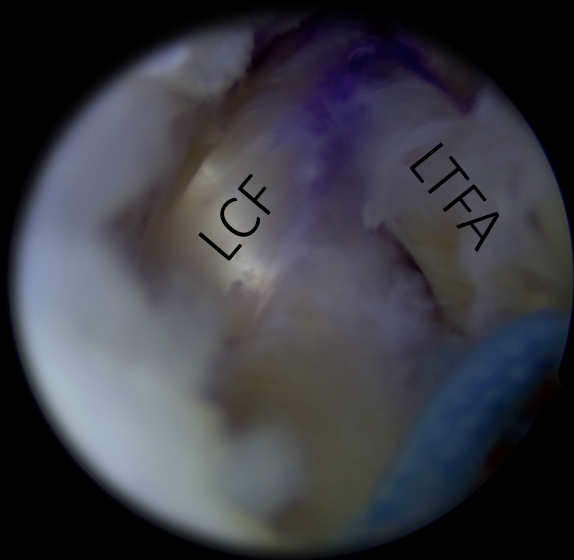


A las 4-5  
semanas  
POP

- Carga y movilidad libre +  
Recuperación funcional

## Claves:

- Preparación y marcaje de la plastia
- Túnel fibular 30º, medial a lateral, proteger peroneos
- Brocar 3-4 mm extra en peroné. Retensado final.
- LCF: referencia tubérculo peroneos, pasar profundo a PB y PL
- Fijar en neutro.



## Riesgos:

- Lesión peroneo superficial
- Pérdida flexión plantar





# Reinserción vs plastia



Article



## All-inside Arthroscopic Lateral Collateral Ligament Repair for Ankle Instability With a Knotless Suture Anchor Technique

Foot & Ankle International  
34(12) 1701-1709  
© The Author(s) 2013  
Reprints and permissions:  
sagepub.com/journalsPermissions.nav  
DOI: 10.1177/1071100713502322  
fai.sagepub.com

Jordi Vega, MD<sup>1</sup>, Pau Golanó, MD<sup>2,3</sup>, Alexandro Pellegrino, MD<sup>1</sup>,  
Eduard Rabat, MD<sup>4</sup>, and Fernando Peña, MD<sup>5</sup>

Knee Surgery, Sports Traumatology, Arthroscopy  
<https://doi.org/10.1007/s00167-019-05676-z>

ANKLE



## Arthroscopic all-inside ATFL and CFL repair is feasible and provides excellent results in patients with chronic ankle instability

Jordi Vega<sup>1,2,3</sup> · Francesc Malagelada<sup>4</sup> · Miki Dalmau-Pastor<sup>1,5</sup>

# Autólogo o alogénico

Systematic Review And Meta-Analysis

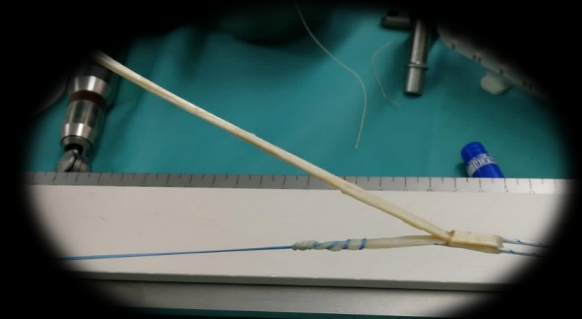
Medicine®

OPEN

## Autograft versus allograft in anterior cruciate ligament reconstruction

### A meta-analysis with trial sequential analysis

Shun-Li Kan, MD<sup>a</sup>, Zhi-Fang Yuan, MD<sup>b</sup>, Guang-Zhi Ning, MD<sup>a</sup>, Bo Yang, MD<sup>a</sup>, Hai-Liang Li, MD<sup>a</sup>, Jing-Cheng Sun, MD<sup>a</sup>, Shi-Qing Feng, MD<sup>a,\*</sup>




Knee Surgery, Sports Traumatology, Arthroscopy (2019) 27:1782–1790  
<https://doi.org/10.1007/s00167-019-05436-z>

KNEE



## Autograft or allograft for reconstruction of anterior cruciate ligament: a health economics perspective

Hema Mistry<sup>1</sup>  · Andrew Metcalfe<sup>2</sup> · Jill Colquitt<sup>3</sup> · Emma Loveman<sup>3</sup> · Nick A. Smith<sup>4</sup> · Pamela Royle<sup>1</sup> · Norman Waugh<sup>1</sup>

# 9

CONGRESO CONJUNTO  
AEA - SEROD  
9th JOINT AEA-SEROD CONGRESS  
MURCIA  
1, 2, 3 DE JUNIO | 2022



- **David Campillo-Recio M.D, Ph.D**
- Unidad de Pie y Tobillo ICATPIE –Hospital Universitario Quirón Dexeus
- Barcelona (España)
- Hospital Germans Trias I Pujol (Badalona)
- Profesor Asociado U.A.B



DR. CAMPILLO  
CIRUJANO DE PIE Y TOBILLO



[dr.davidcampillo](https://www.instagram.com/dr.davidcampillo)



[david.campillo@icatme.com](mailto:david.campillo@icatme.com)

[www.icatpie.com](http://www.icatpie.com)