

9 Congreso AEA SEROD 2022 MURCIA

Manejo quirúrgico de bridas del nervio ciático

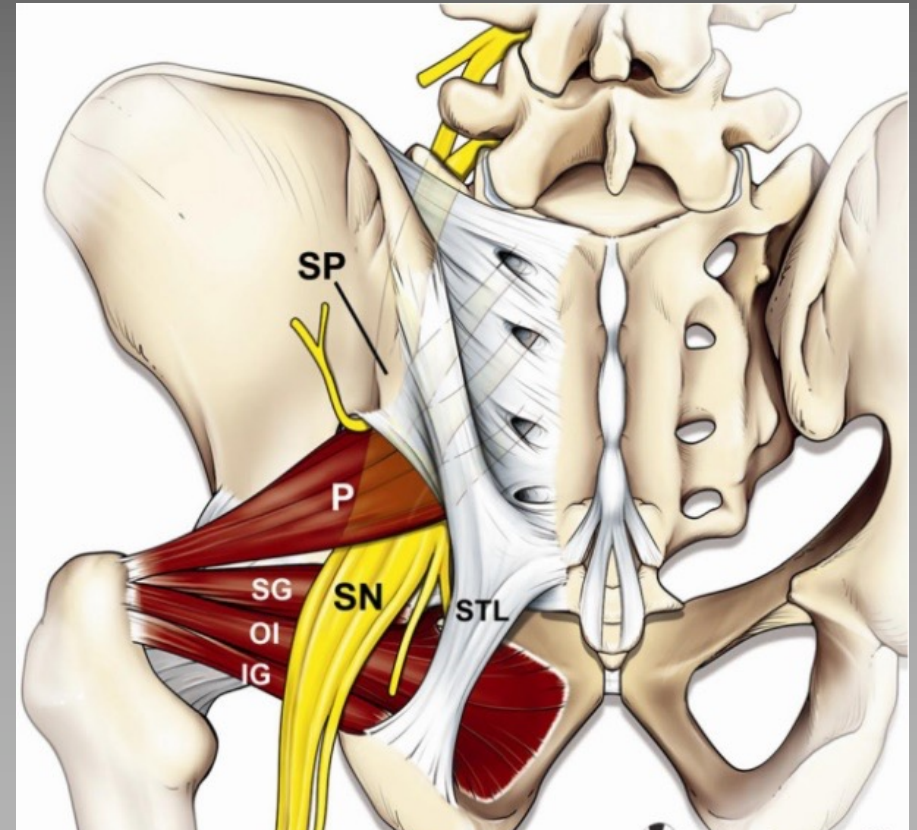
Dr. Luis Pérez Carro

Dr. Jose Antonio Fernandez Divar

Santander. Spain

lpcarro@gmail.com

www.artroscopiaycadera.es





**ISHA BOARD MEMBER
ISHA RESEARCH COMMITTEE
ISHA MEMBER AND FACULTY
ESKKA MEMBER AND FACULTY
ISAKOS MEMBER AND FACULTY
EDITORIAL BOARD CUADERNOS ARTROSCOPIA**

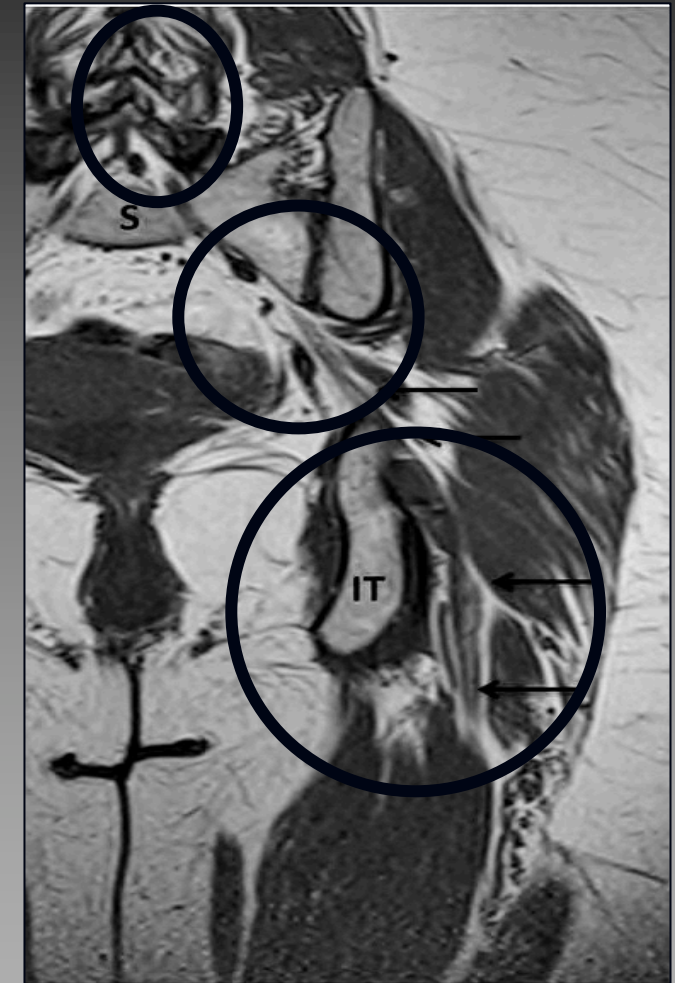
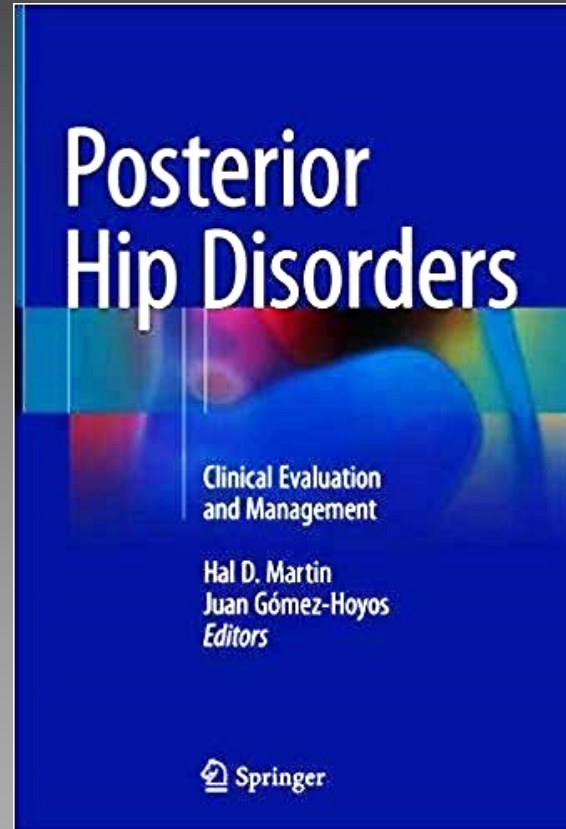
Disclosed no conflict of interest

Posterior Hip Pain: Etiology



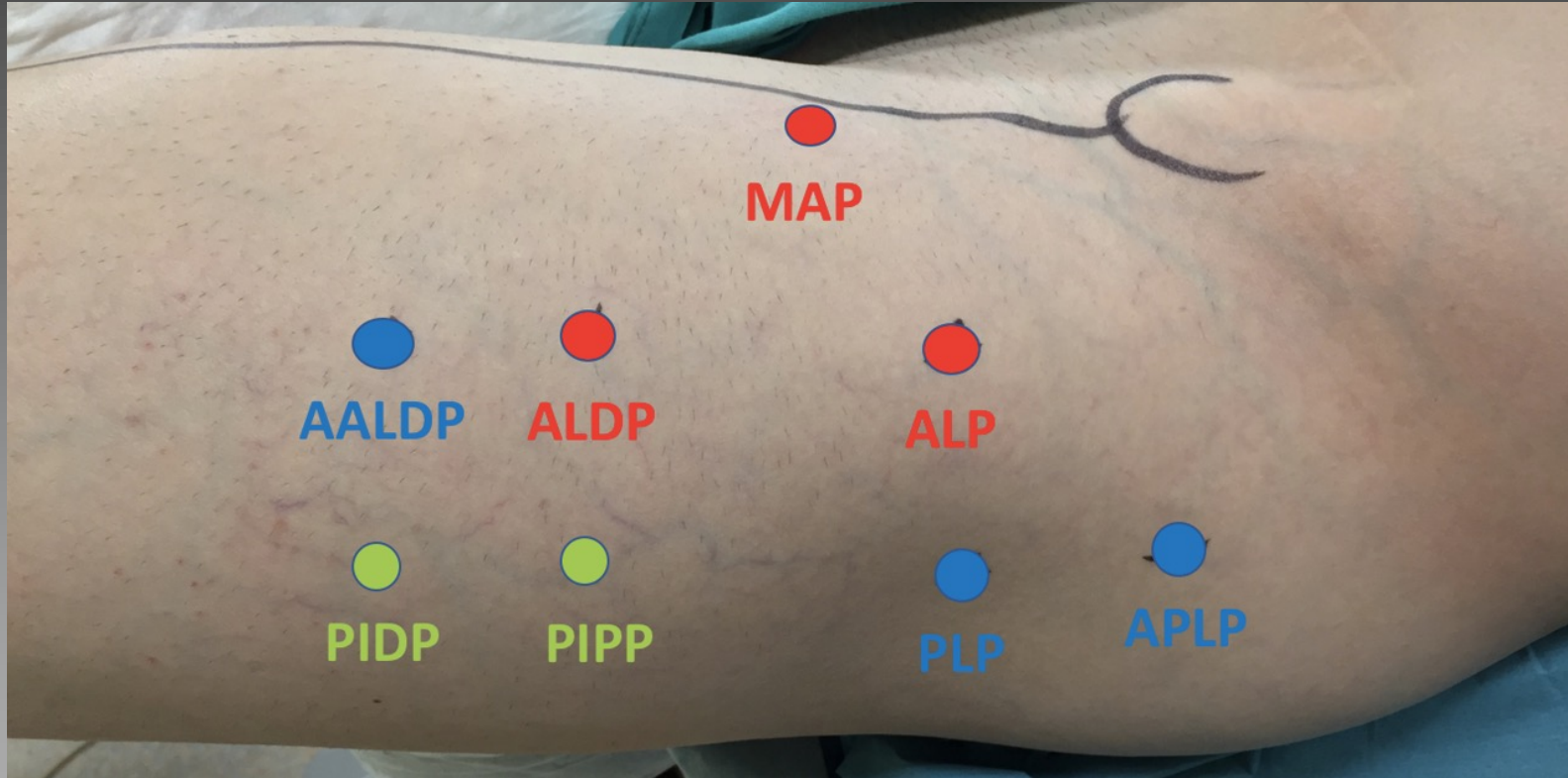
Specific musculoskeletal entrapments

- Piriformis syndrome
- Obturator internus and gemelli syndrome
- **Fibrous bands**
- Quadratus femoris. Ischiofemoral pathology
- Hamstring conditions
- Gluteal disorders
- Orthopedic causes: Back problems

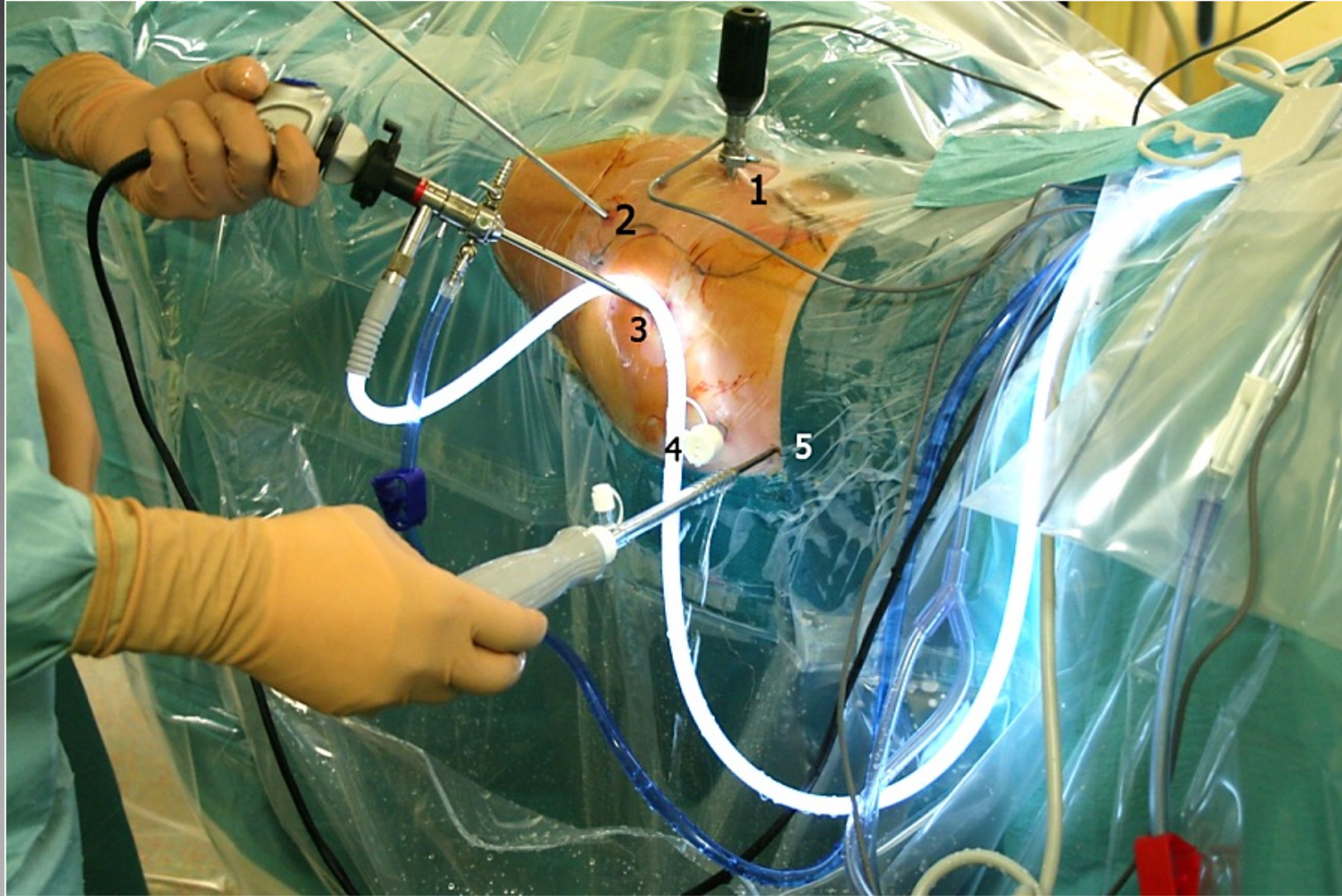


Moisés Fernandez, Luis Pérez Carro, Luis Cerezal Imaging Assessment in Posterior Hip Pathology
Eds Hal Martin & J. Gomez Hoyos . Springer 2019

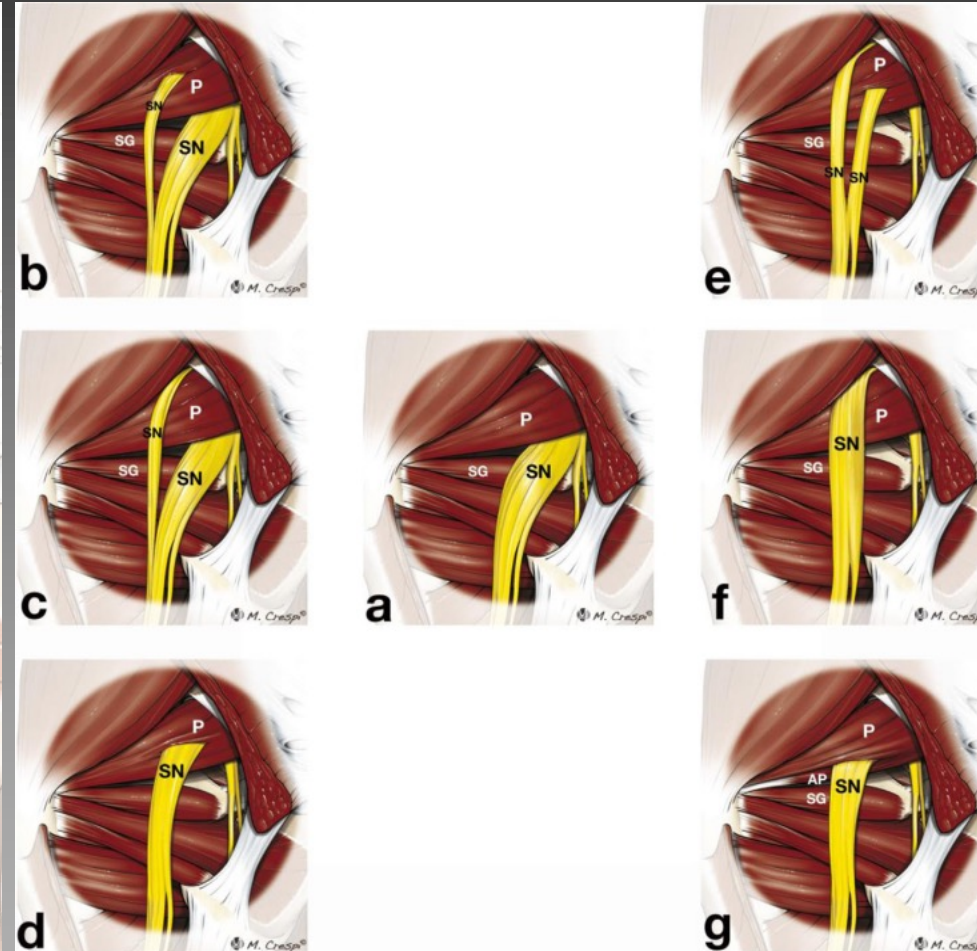
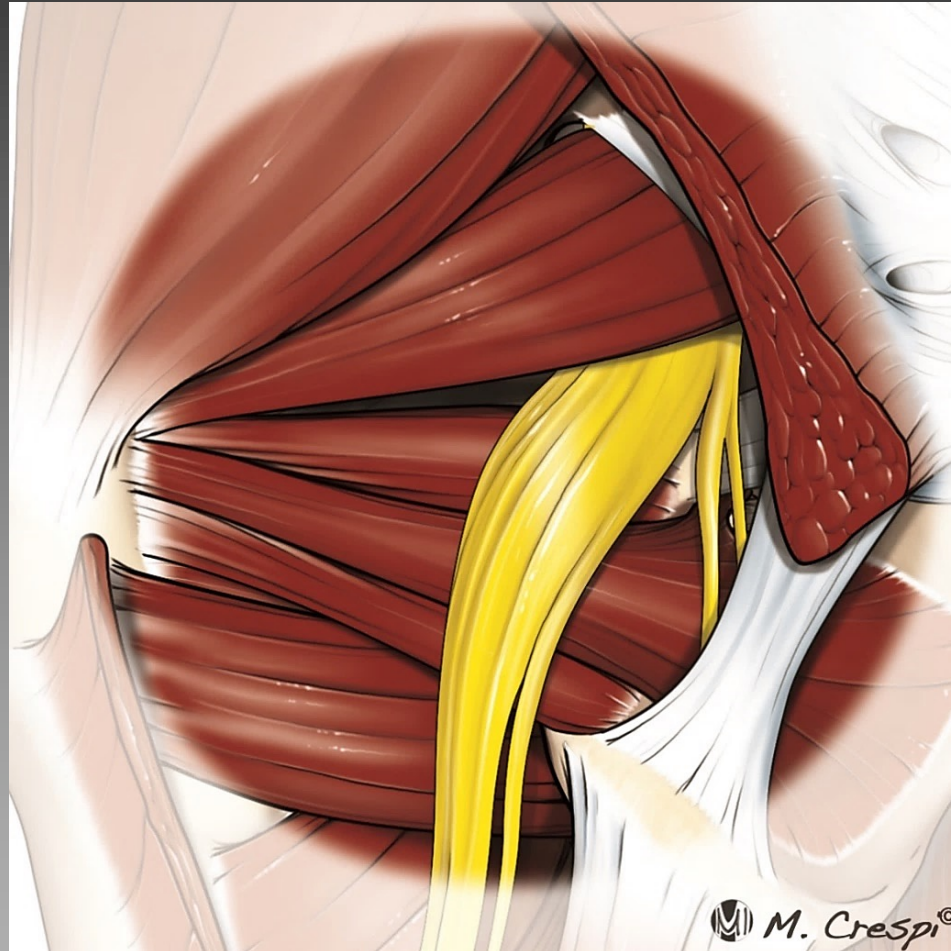
DGS treatment: Portals



DGS treatment: Portals



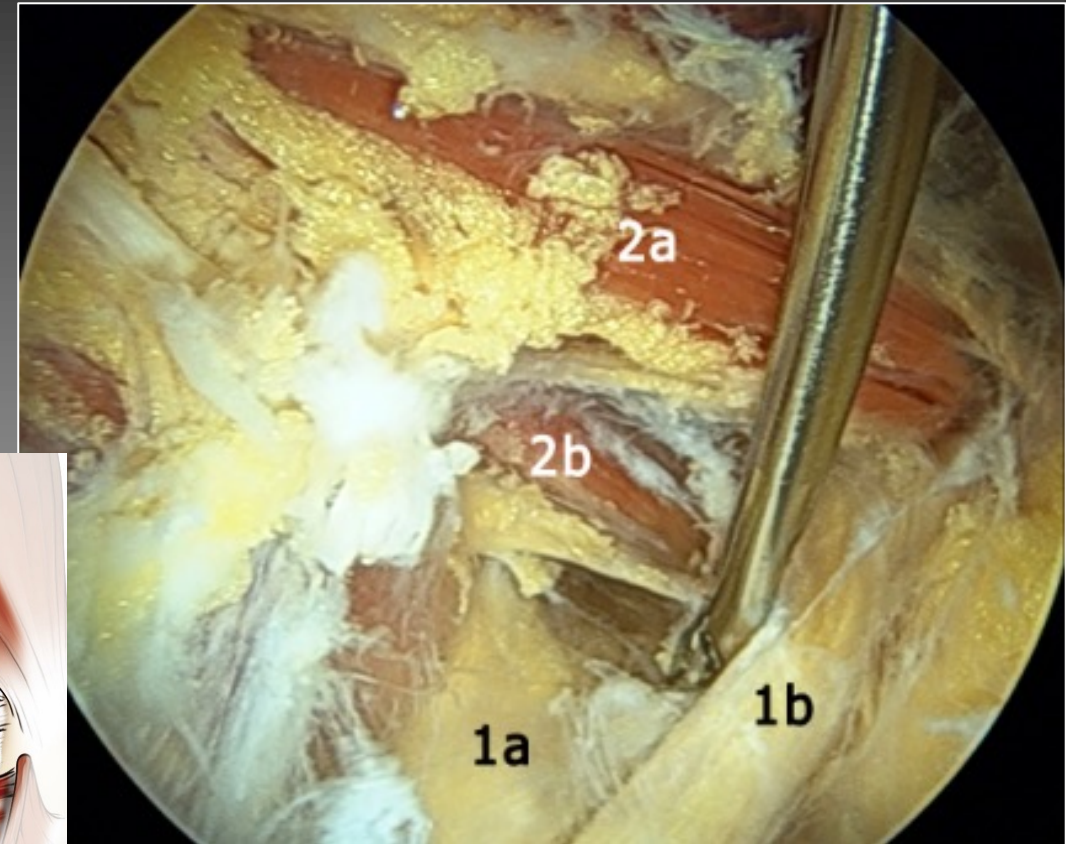
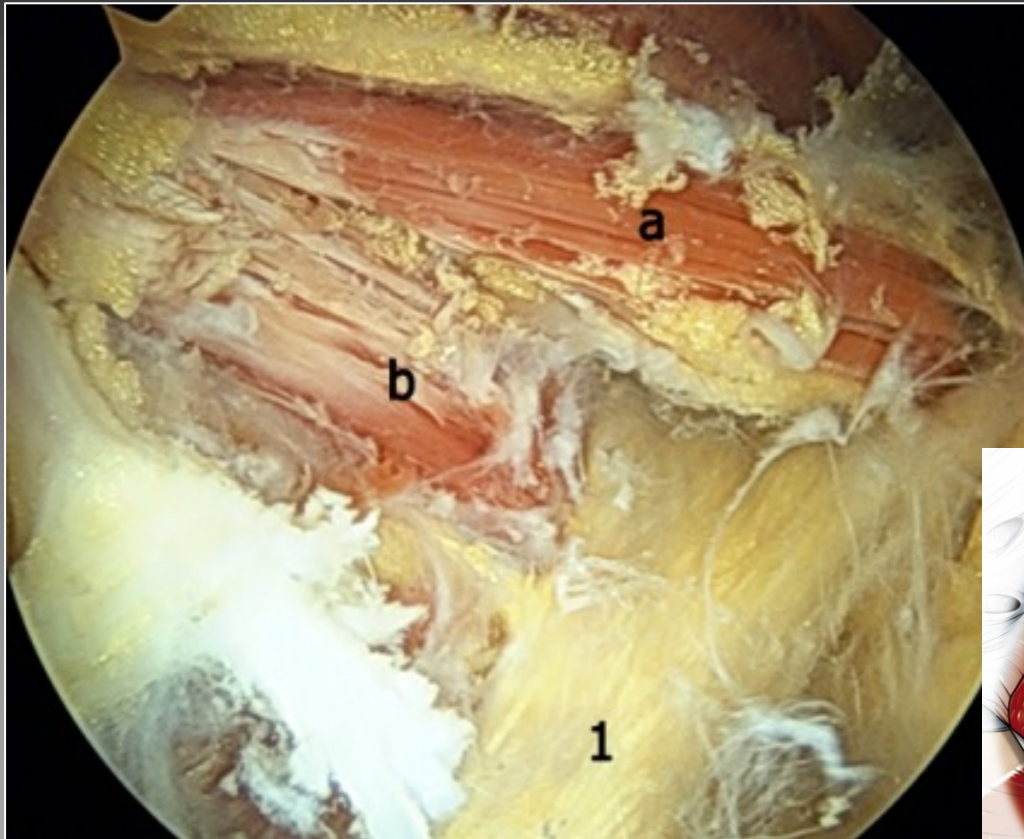
1.2 Anatomical variations sciatic nerve



Deep gluteal syndrome: anatomy, imaging, and management of sciatic nerve entrapments in the subgluteal space

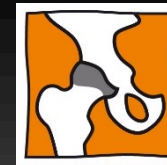
M. Fernandez, L. Cerezal, L. Pérez Carro. Skeletal Radiology. July 2015

1.2 Anatomical variations sciatic nerve



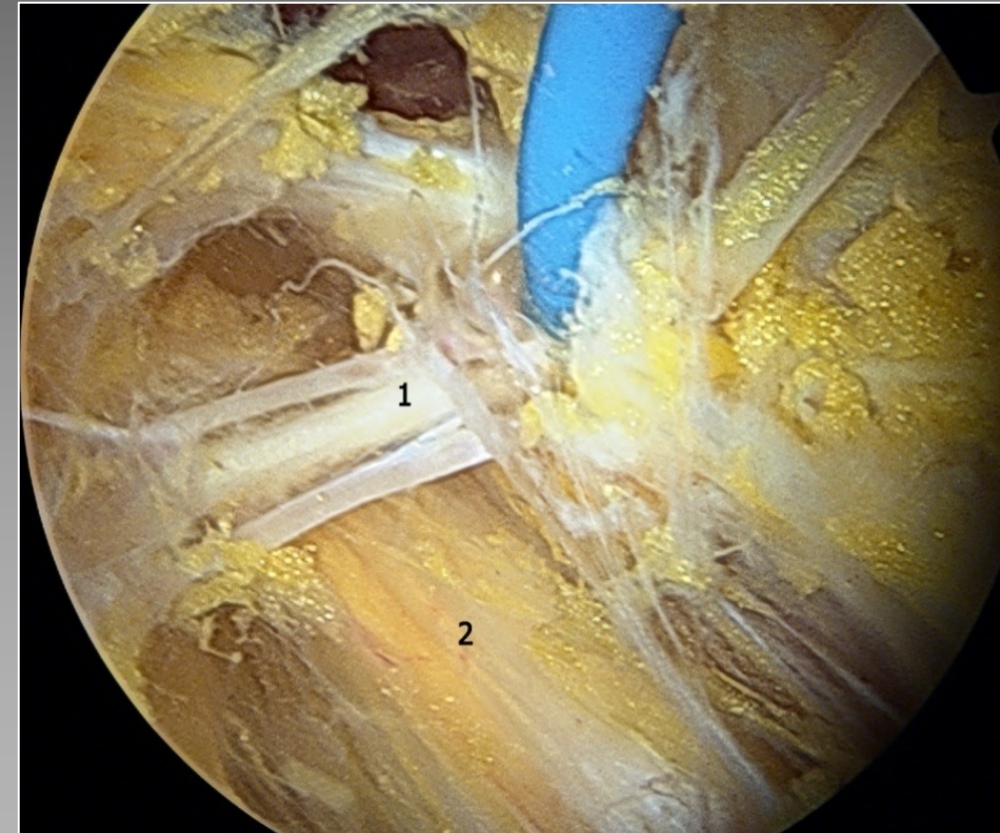
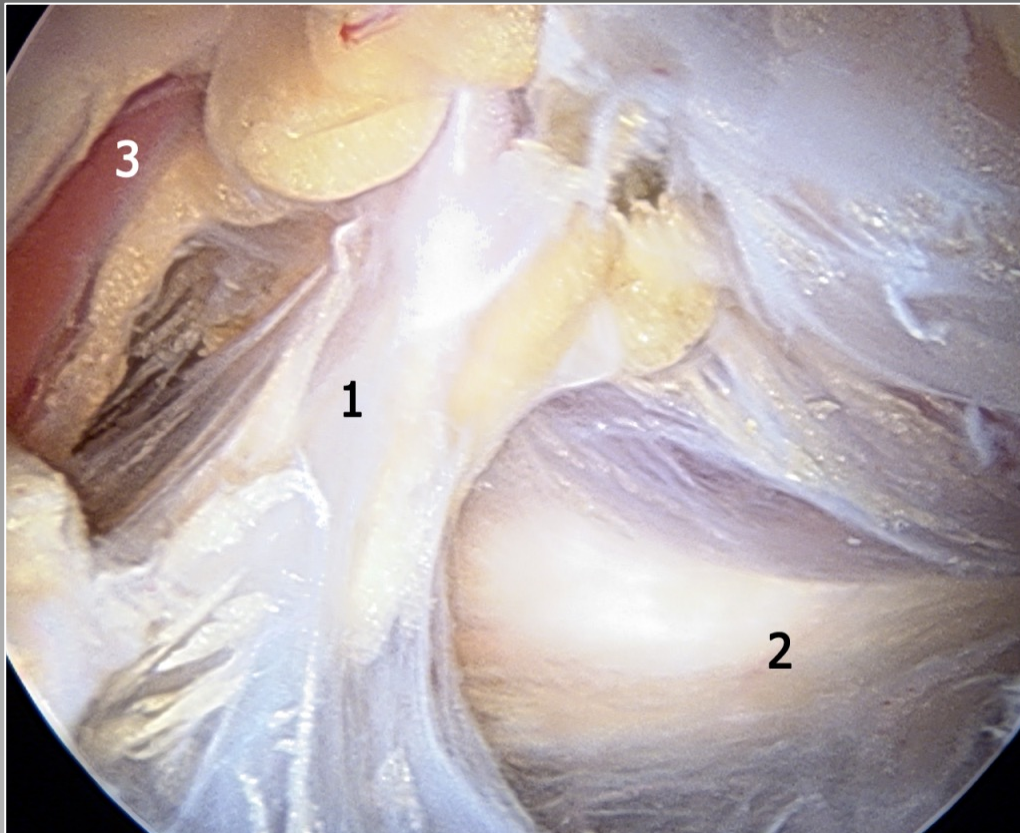
Luis Pérez Carro, Moisés Fernández, Luis Cerezal, Ivan Sáenz et al. Gross and Endoscopic Posterior Hip Anatomy Posterior Hip Pain. Eds Hal Martin & J. Gomez Hoyos . Springer 2019

Fibrous bands: Macroscopic Structure

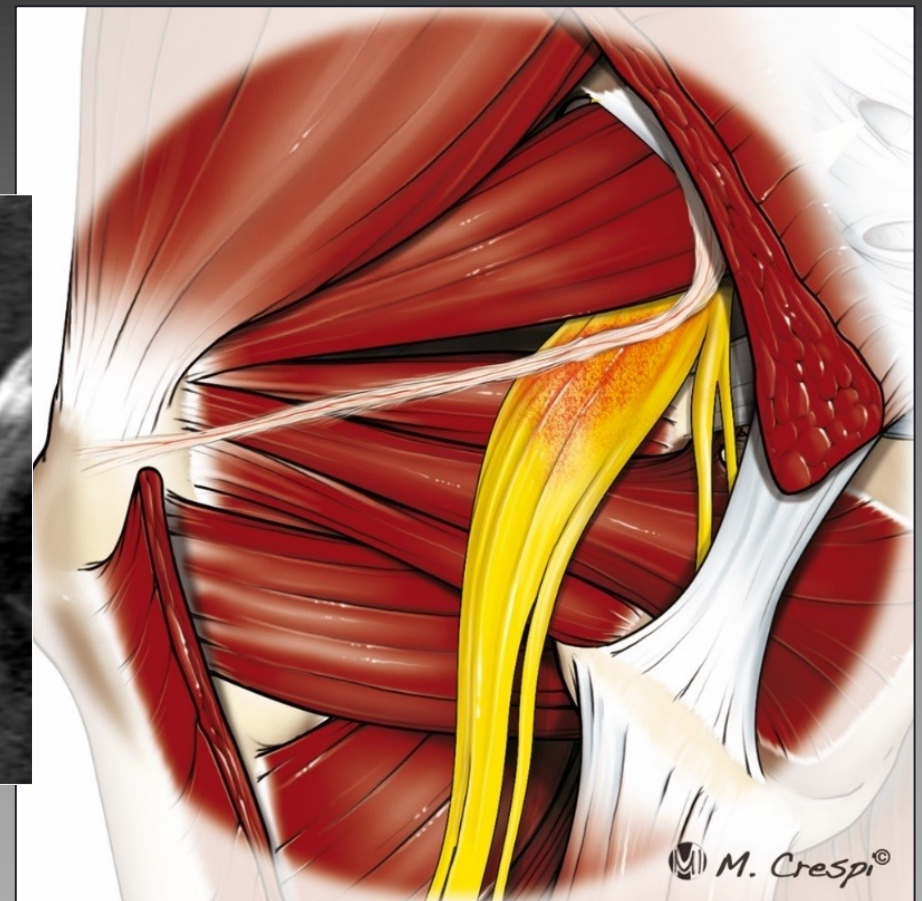
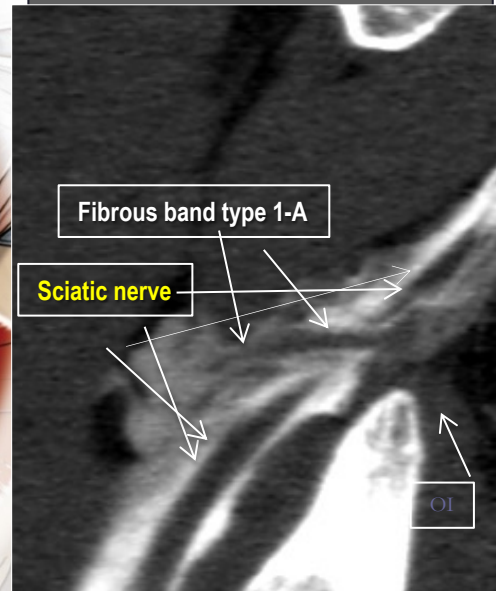
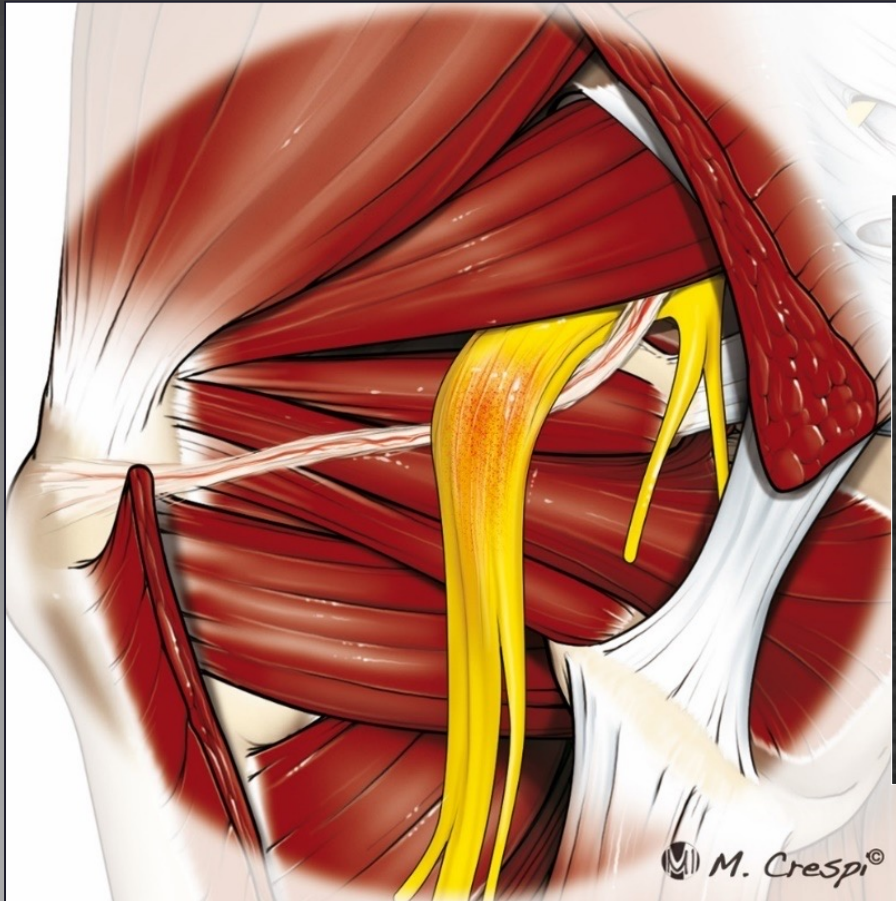


MACROSCOPIC STRUCTURE : Three primary types of bands:

- **Fibrovascular bands**, with vessels macroscopically identifiable by MRI and endoscopy.
- **Pure fibrous bands**, without identifiable macroscopic vessels.
- **Pure vascular bands**, exclusively formed by a vessel without surrounding fibrous tissue.



Pathogenic Mechanism. Type 1: Compressive or Bridge type



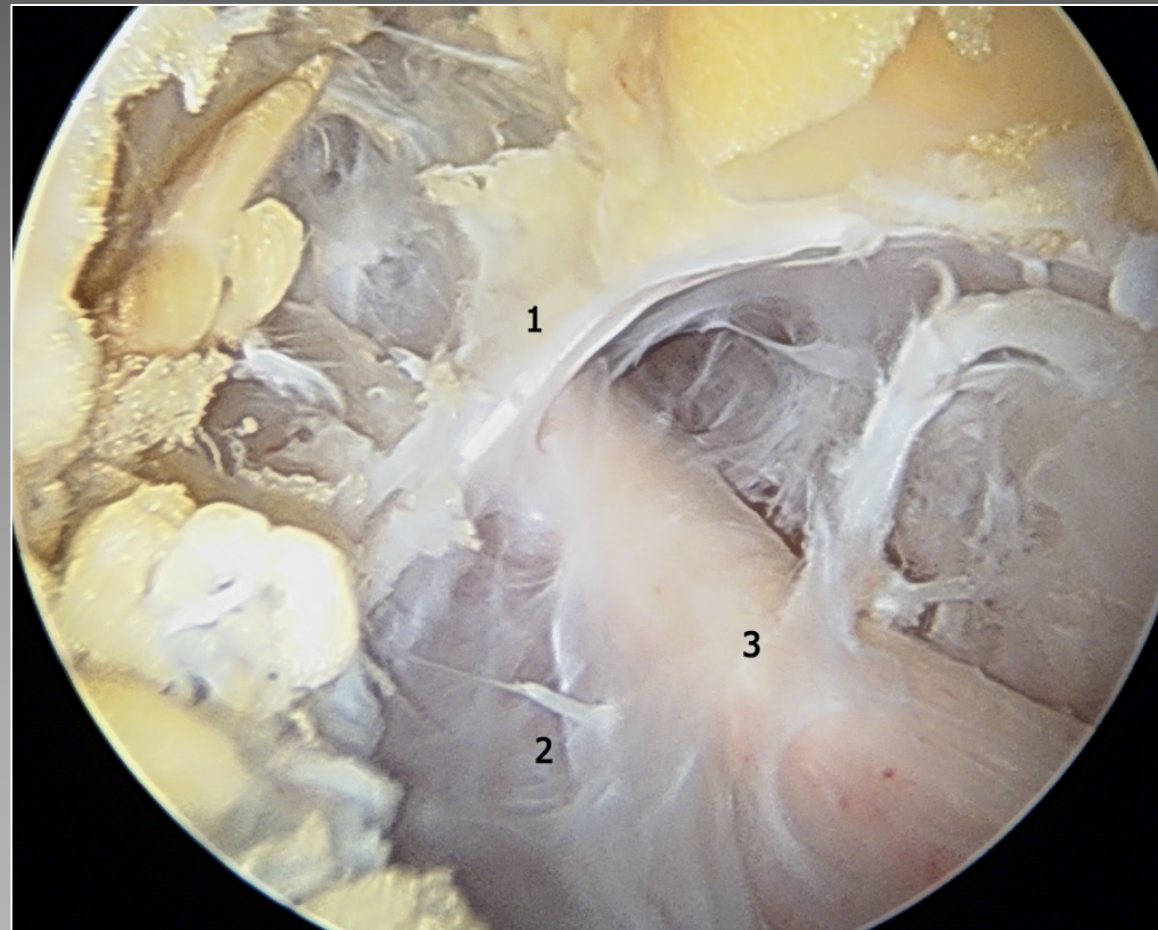
**Deep gluteal syndrome: anatomy, imaging, and management
of sciatic nerve entrapments in the subgluteal space**
M. Fernandez, L. Cerezal, L. Pérez Carro. Skeletal Radiology. July 2015

Adhesive: Type 2: Horse-strap

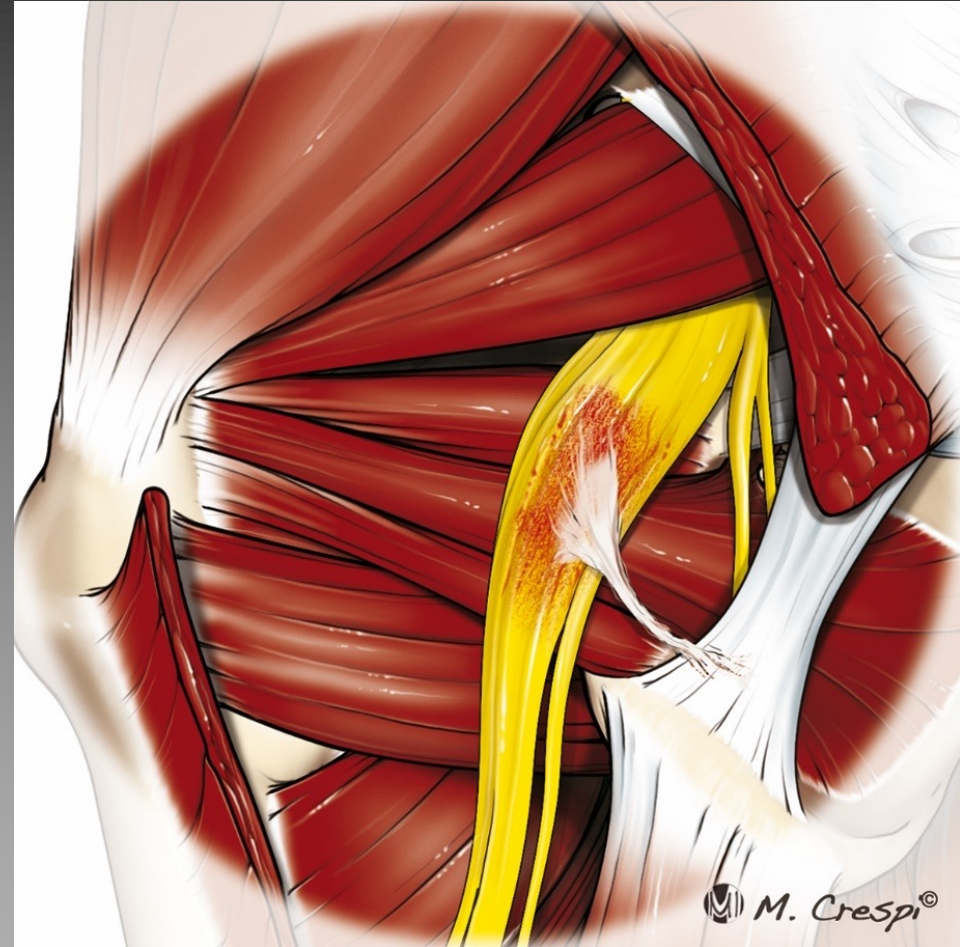
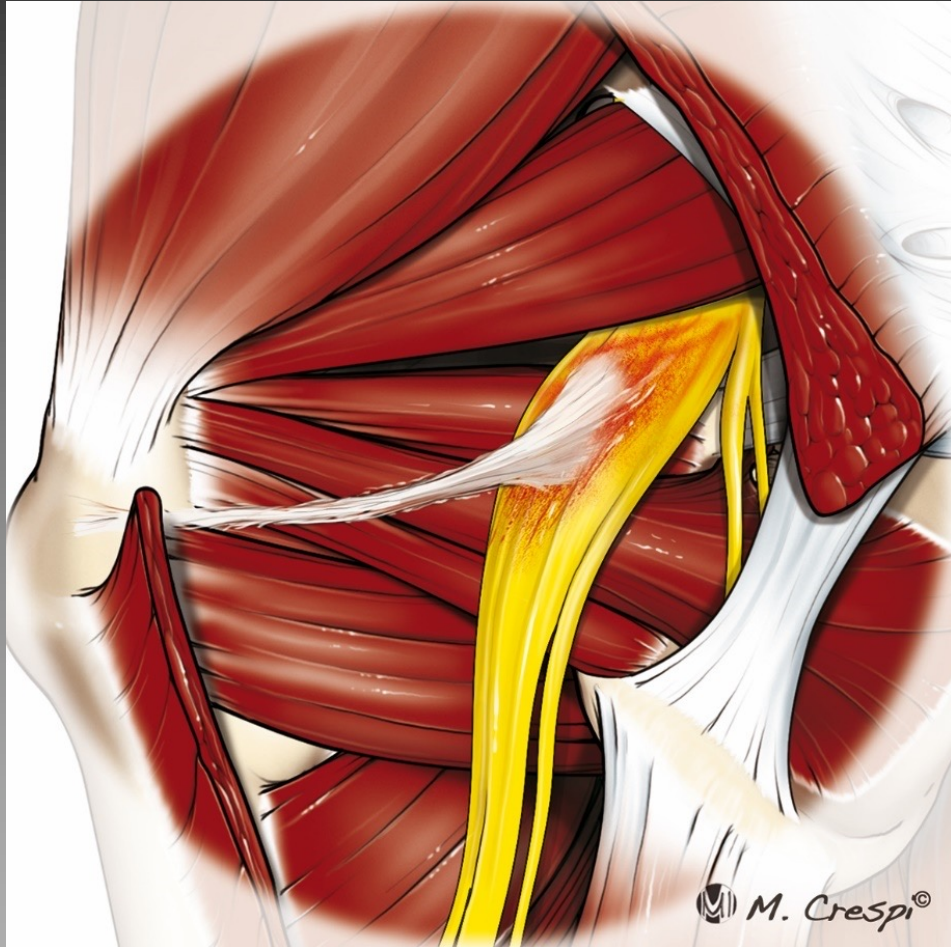


2. Adhesive bands or horse-straps bands (type 2)

Endoscopically located in the same anteroposterior plane to the sciatic nerve and can be attached to it laterally, from the **major trochanter (type 2A)** or medially, **from the sacrotuberous ligament (type 2B)** .

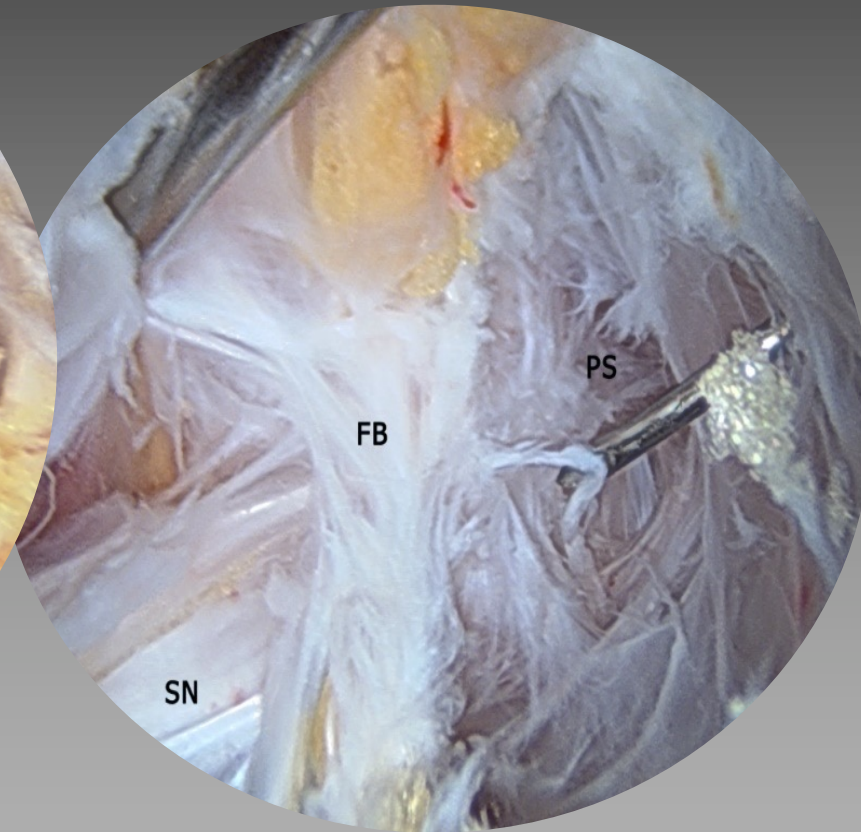
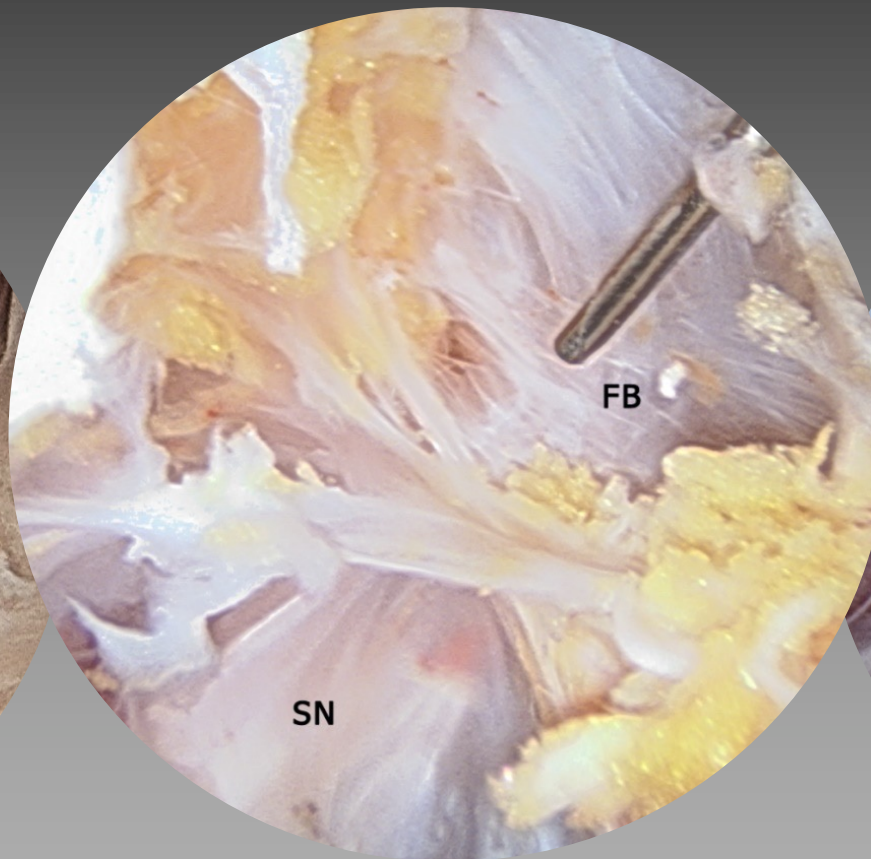


Adhesive: Type 2: Horse-strap

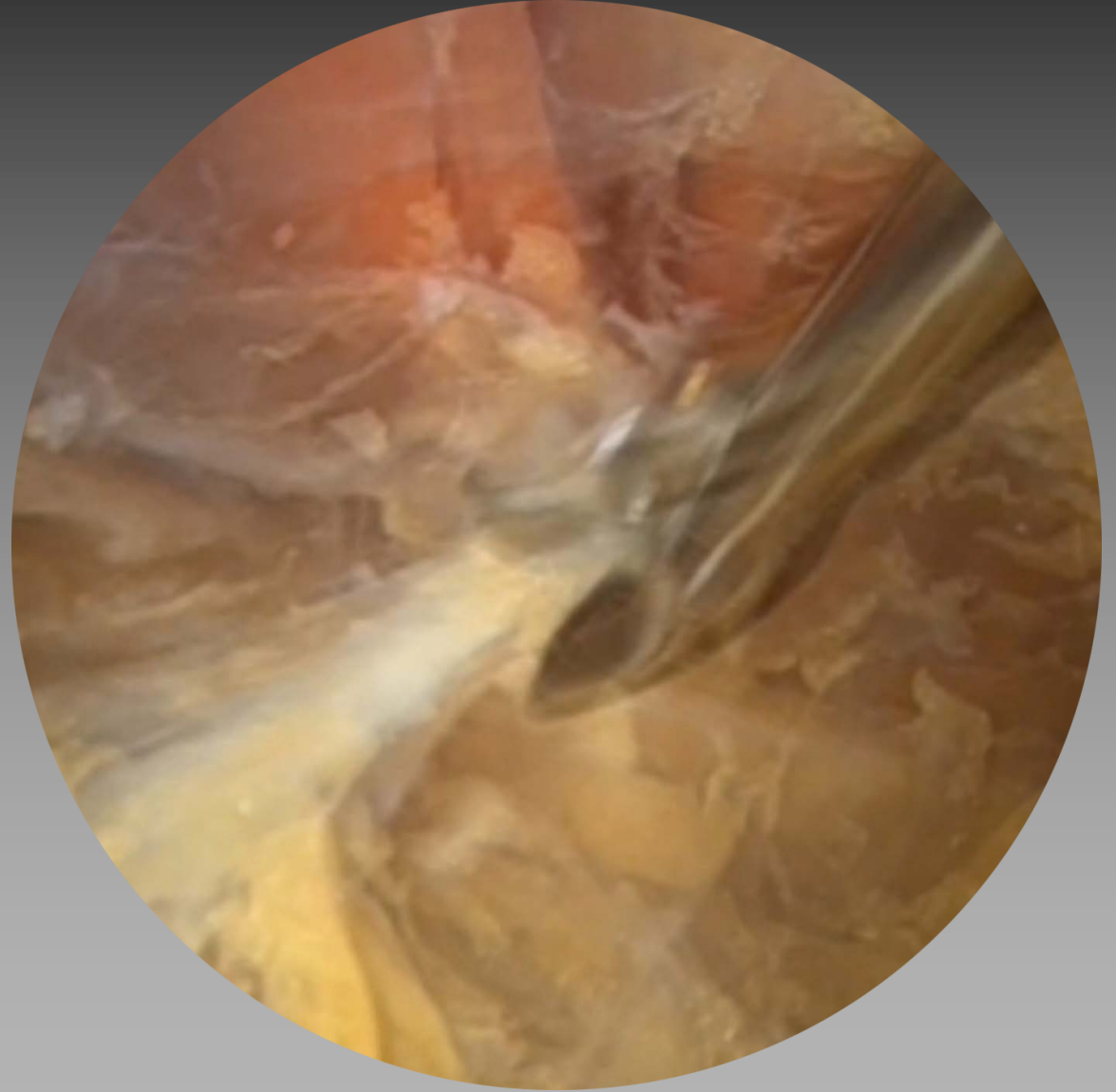
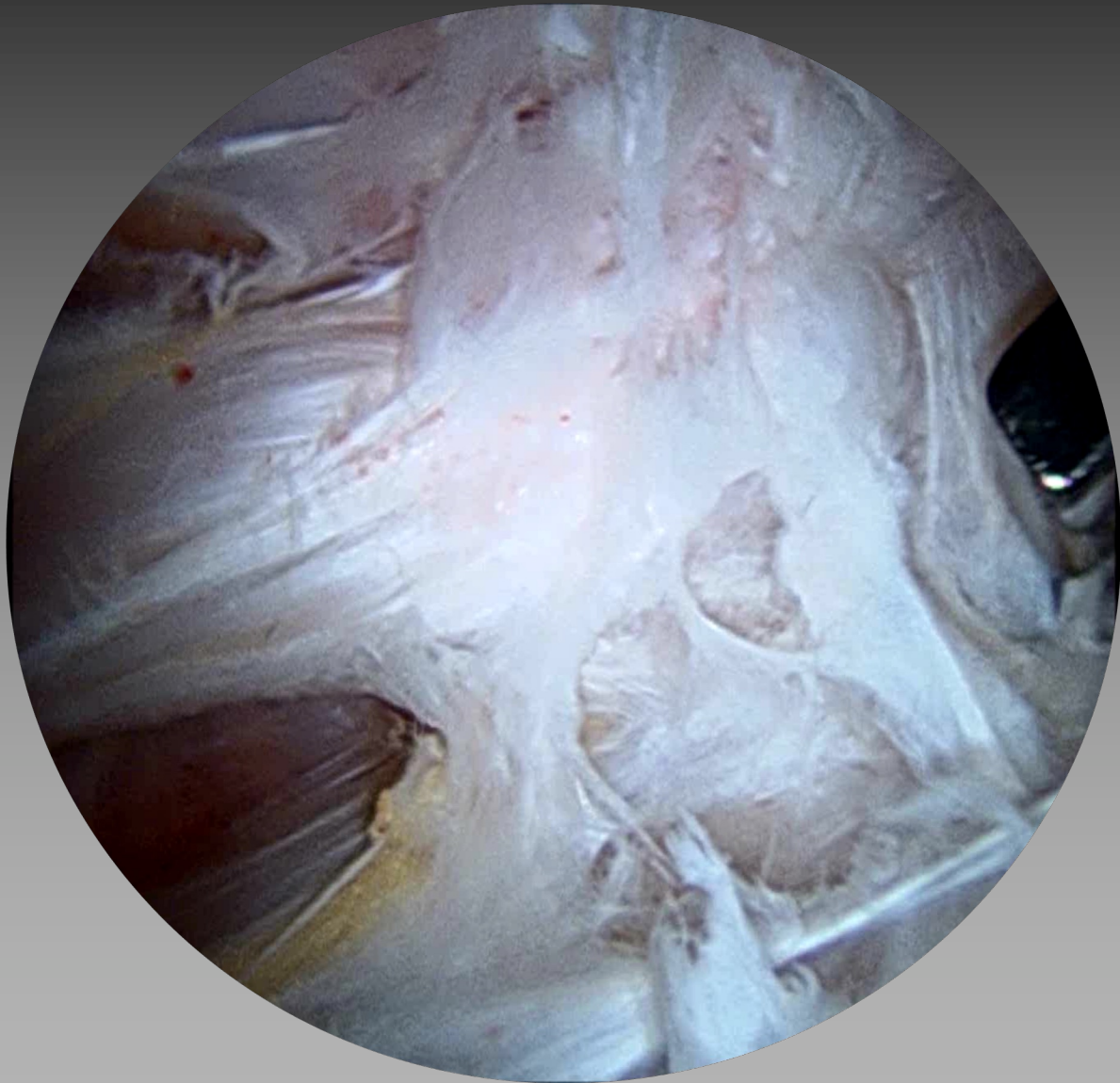


L. Perez Carro, M. Fernandez, L. Cerezal. Deep gluteal space problems: Piriformis syndrome, ischiofemoral impingement and sciatic nerve release. **Muscle, ligaments, tendons** 2016

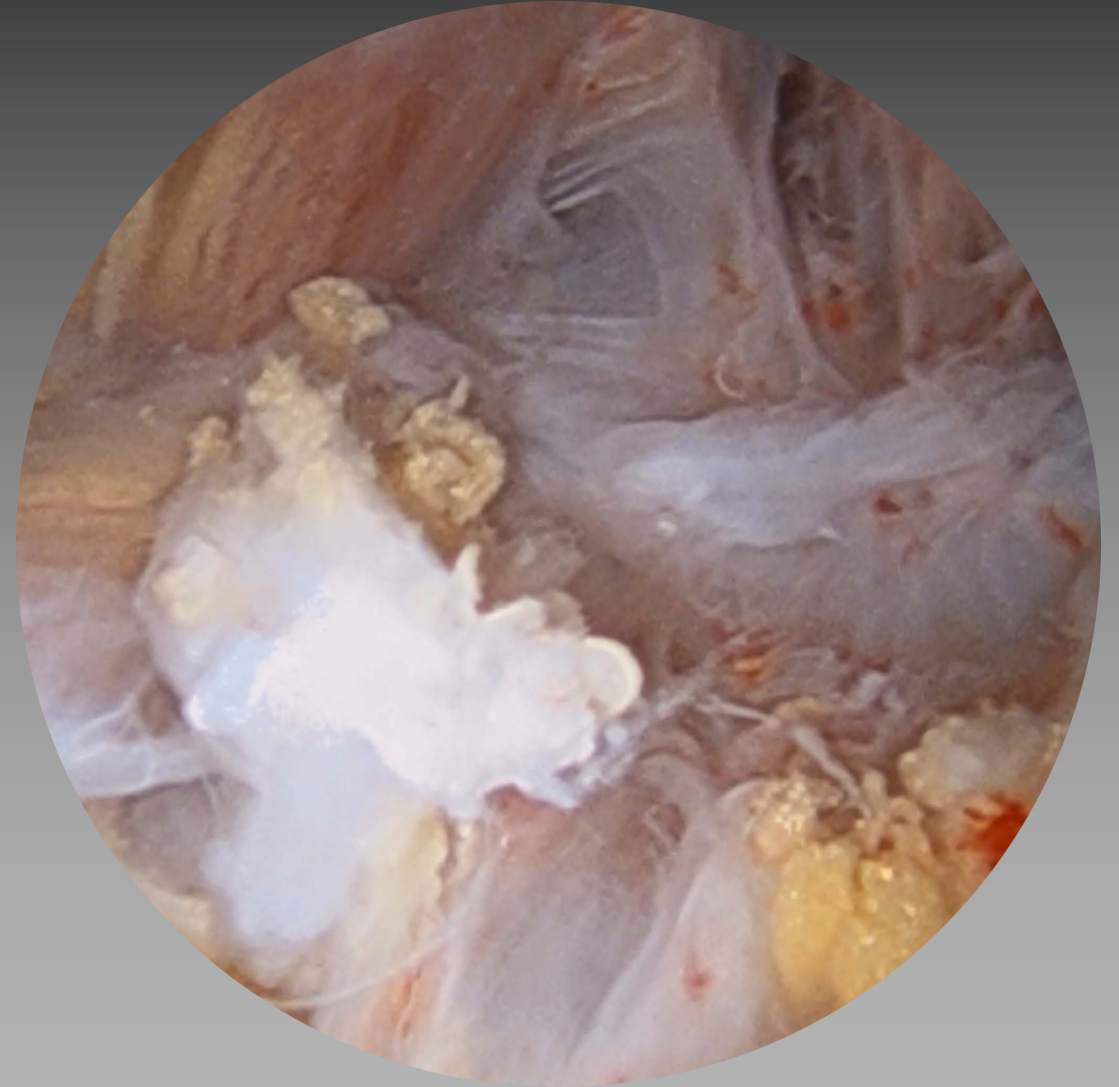
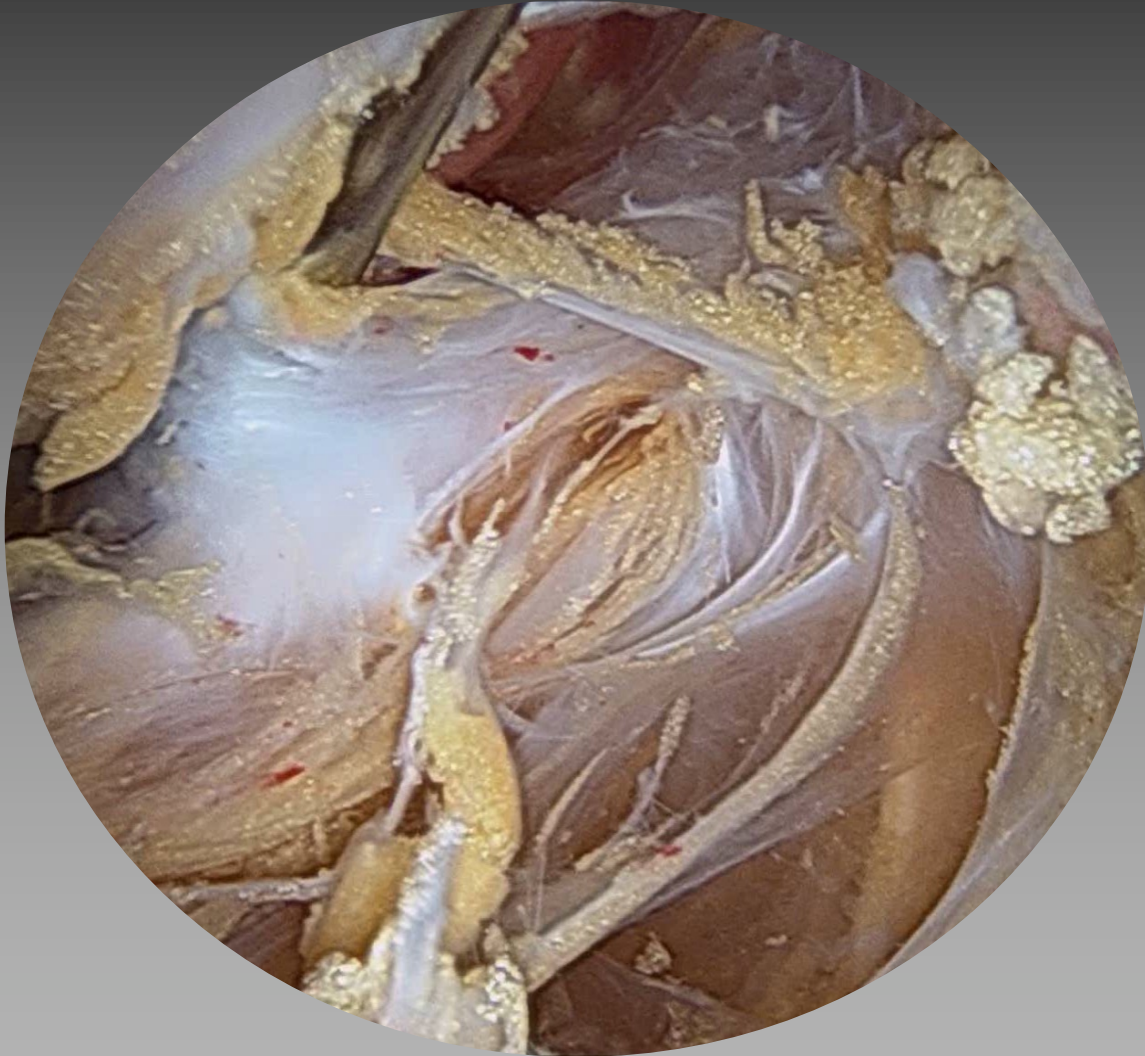
Type 3: Complex



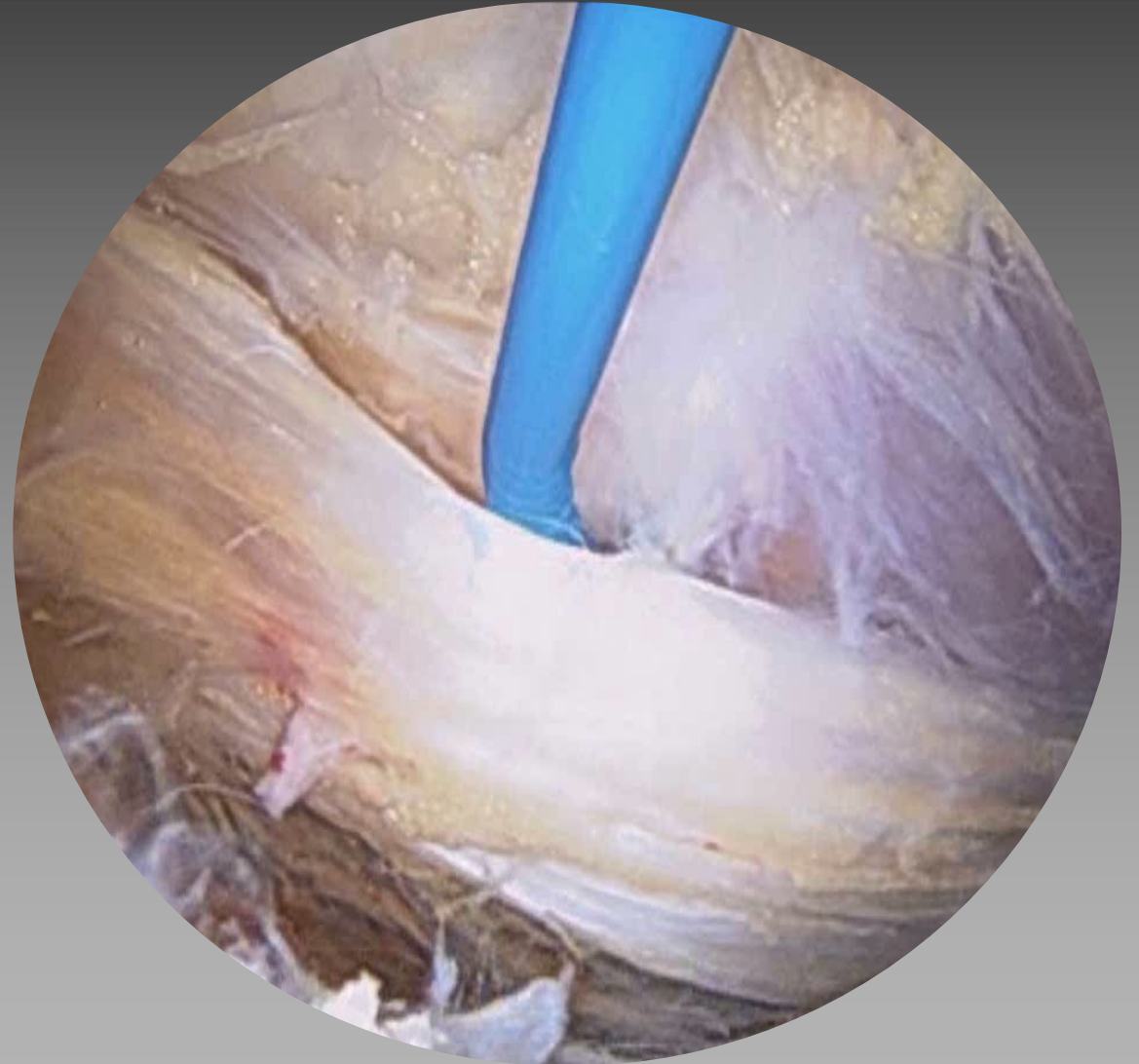
Sciatic Neurolysis



Sciatic Neurolysis



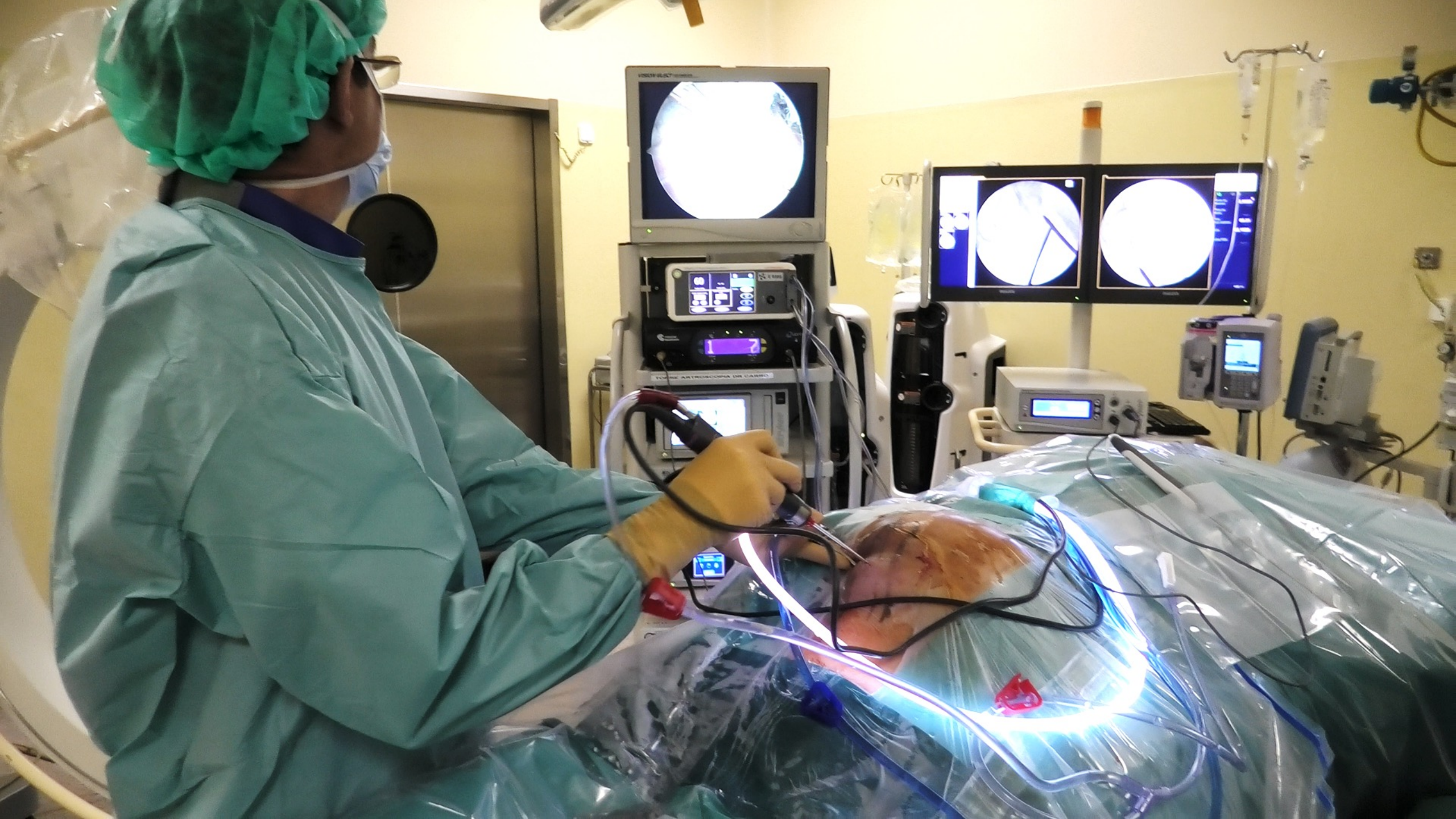
Sciatic Neurolysis



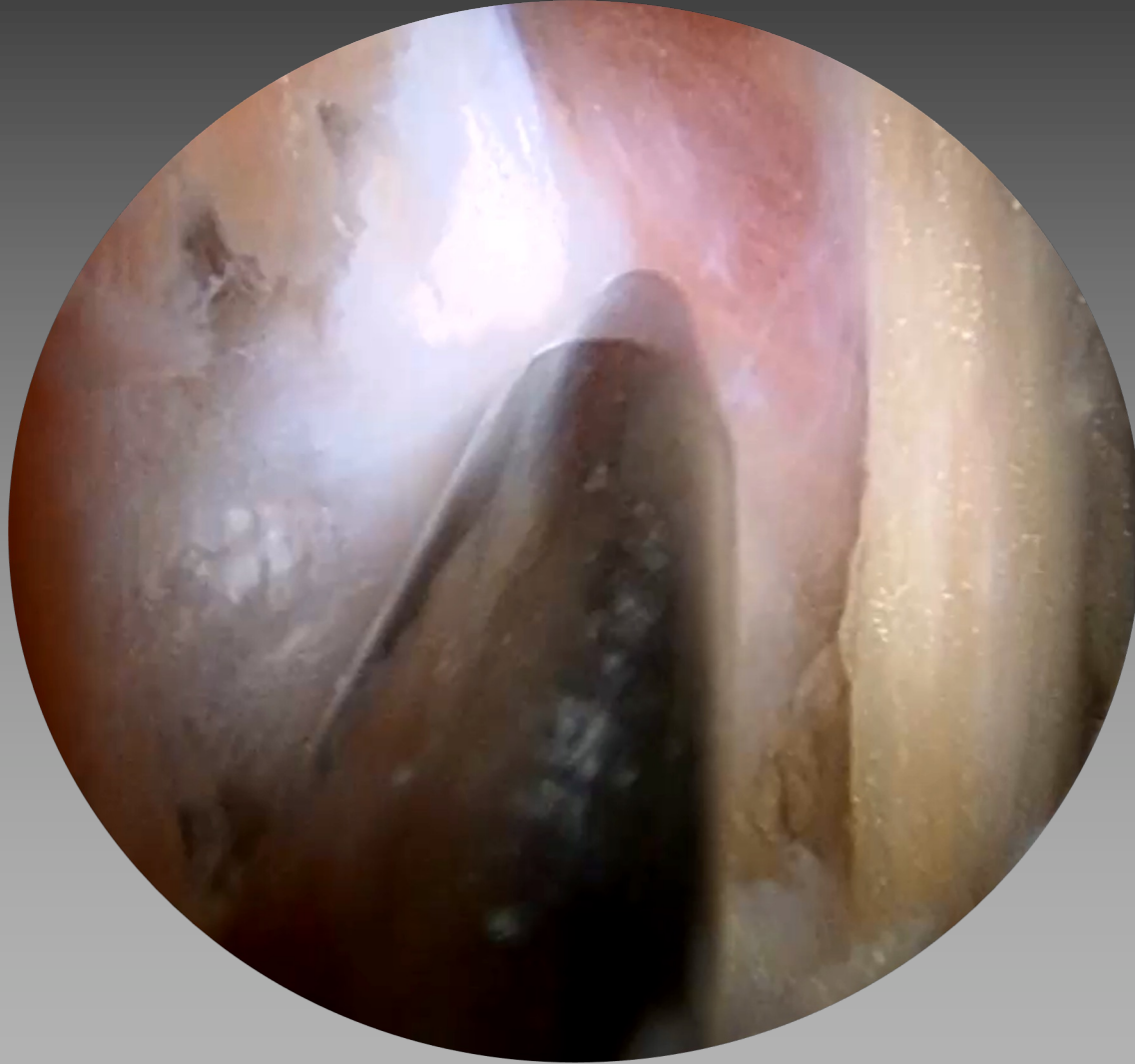
Hamstring: Prone position



- Medial – 2cm medial to IT
- Lateral – 2cm lateral to IT
- Inferior – 4cm distal to IT
- Superior- 2-4 cm proximal



Hamstring: Prone position





ISHA 2022
Annual Scientific Meeting

ISHA
ANNUAL SCIENTIFIC MEETING
13 - 15 OCTOBER, 2022
GLASGOW, UK



ISHA
The Hip Preservation Society